



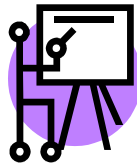
KOOWEE CAREERS NEWSLETTER

CareerNewsNo4: 30.03.09



REMINDERS>>>>>COMING SOON

- > **Monash Uni:** 'At Monash' series; **Tues 31 Mar** - Science; **Wed 1 April:** Arts/Humanities; see www.monash.edu.au/study/events; both at Clayton campus
- > **Forensic Medicine:** Career info. session at Victorian Institute of Forensic Medicine, 57-63 Kavanagh St, Southbank; 12.30-4pm, **Mon 6 April**; www.vifm.org.
- > **Uni Student for a Day** (Monash Uni, Gippsland); **7 - 8 April**; see www.gippsland.monash.edu.au
- > **Art/Design/Film/TV:** Swinburne, Prahran; **7 April**; www.future.swinburne.edu.au/artsanddesign
- > **La Trobe University:** 'Talk and Tour'; **7 April**; www.latrobe.edu.au/study/events/talk-and-tour-2009
- > **Careers at the Zoo:** Werribee Open Range Zoo; 8, 9, 16, 17, 23 & 24 April; www.zoo.org.au/learning
- > **Melbourne Uni:** 'Access all Areas'; **17 April**; www.futurestudents.unimelb.edu.au/events/vic/
- > **'The Age' VCE & Careers Expo:** **24-26 April**; Caulfield Racecourse; www.education.theage.com.au



1. 'AT MONASH' SEMINAR SERIES CONTINUES - Coming seminars (all commence 6.30pm): For info call 9903 4758, or Valerie.foster@adm.monash.edu.au

- **Tues 5 May:** **Education, Sport & Outdoor Recreation**, Peninsula campus, Frankston
- **Thur 7 May:** **Physiotherapy, Occupational Therapy and Health Sciences**, Peninsula
- **Tues 12 May:** **Pharmacy & Pharmaceutical Sciences**, Parkville campus, 381 Royal Pde
- **Wed 13 May:** **Architecture**, Caulfield campus
- **Mon 18 May:** **Psychology**, Clayton campus
- **Tues 19 May:** **Drama & Theatre Studies**, Clayton campus
- **Wed 20 May:** **Business & Economics**, Caulfield campus
- **Thur 21 May:** **Engineering**, Clayton campus

See www.monash.edu.au/study/events for details, and for seminars later in the series.



2. UMAT NEWS - The UMAT 2009 Information booklet is NOW available at <http://umatweb.acer.edu.au>. The Faculty of Health Sciences at La Trobe University has confirmed that the UMAT will **only be a requirement** for **NON Year 12 applicants** applying for **Dentistry and Oral Health Science** in 2010 and **NOT** current Year 12 applicants (see page 3 of the 2009 Information Booklet). **NOTE:** Selection for Monash Uni physiotherapy requires an **interview** in addition to the UMAT and ENTER (see last CareerNews).



3. VCE AND CAREERS EXPO - A chance to collect info. at **one location** from a range of sources - Universities, TAFE's, student exchange, defence forces, independent colleges, professional bodies, VCE resource providers. **What:** 'Age' VCE & Careers Expo **When:** 10am-5pm, 24-26 April; **Where:** Caulfield Racecourse; **Cost:** \$10 (incl. 'Age'). **Mrs. Ingram still has FREE tickets to give away - first in basis !!**



4. INTO DESIGN? The International Design Week (4 - 7 May) program includes 'AGIDEAS 2009 Futures'. Hear insights from **design leaders**; meet tertiary college staff with design course info. Gain insights into **pathways** and explore possibilities of a career in **film & TV, graphics, industrial & product design, illustration, motion graphics, architecture, urban design, photography, interactive media and advertising**. Cost (\$30) includes presentations from international and Australian speakers. **When:** Course Expo: 4.00-6.30pm, Speakers: 6.30-8.30pm, Tues 5 May; **Where:** Hamer Hall; **Info:** www.agideas.net, contact@agideas.net, ph 9416 2966.



5. INTERESTED IN ENGINEERING? Engineers Australia invites you to attend their Careers Expo. **When:** 1-7pm, Wed 29 April; **Where:** Melbourne Town Hall (cnr Swanston & Collins St). **Cost:** Free; Find out about making a choice regarding the education and career opportunities available in engineering.

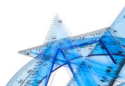


6. CONSIDERING THE DEFENCE FORCE GAP YEAR AFTER YEAR 12? Applications for this program open on 1 May, 2009. Gaining a position is very competitive, so apply early. **Info:** www.defencejobs.com.au OR call 13 19 01.

7. FOCUS ON SOME GREAT OPTIONS AT RMIT



Textile Design: a 3-yr B. Arts degree at Brunswick with an industry focus, real time client projects and compulsory 'work integrated learning'; high employment rate, with many employers contacting RMIT direct. **Key skills gained:** computer aided design, technical print, weave and knot, business, communication, developing a folio, preparation for work (with industry trained staff). Textile designers are creative producers of design, aware of sustainability issues, trained in team work, employed in fashion, home-wares, automotive, sportswear, interior, product design, branding, forecasting. **Selection:** folio (70%) interview (30%). www.rmit.edu.au/textiledesign.



Architecture: a 3-yr B. Architectural Design degree leading to the 2-yr Master of Architecture professional qualification. Last year saw 30 applicants per place. **Who is suited?** Like doodling, sketching, drawing, observing, measuring, making, modelling, creating? Interested in constructing, wood or metal working? Enjoy presenting, collaborating, discussing, critiquing, thinking, problem solving, wondering? You have independence, drive, observation skills, curiosity, commitment, resilience and ambition. After five years of study you will need **two years** employment to satisfy ARVB registration. Employment rate is high, with many students working part-time in the field during the course. **Selection** is by pre-selection kit, interview and ENTER.



COMMUNICATIONS: there are four 3-year Bachelor of Communications degrees:

- **Journalism:** (quite high attrition after 1st year); tough career - must be competitive. Trains for entry level jobs in multimedia - print, radio, TV, on-line. Work in news, magazines, freelance or specialist areas. Selection: ENTER (95.75 in 2008)
- **Public Relations:** graduates work in media relations, often dealing with journalists. They sometimes have corporate roles and some move up through

organisations into strategic planning, working in campaigns, re-branding and in consultancy. Selection: test, interview, ENTER.

- **Media:** graduates work in production, not reporting. They can work in radio and TV, and with cinema and documentaries. Selection: ENTER (92.90 in 2008).
- **Professional Communication:** covers the areas from the three above; students specialise later in one or two of them. Some humanities subjects are studied as well (eg literature, philosophy). Selection: ENTER (94.25 in 2008).



- **HEALTH:** RMIT has several health-related degrees (most run at Bundoora campus).

- **Chinese Medicine:** a 5-year degree, the only university degree in Victoria offering studies in both **Chinese Herbal Medicine** and **Acupuncture**.
- **Chiropractic:** a 3-year degree plus 2-yr Master degree program (only course in Victoria); selection by ENTER and completion of a form. You **MUST** be able to demonstrate a commitment to this method of health care.
- **Osteopathy:** a 3-year degree plus 2-yr Master degree program (one of two courses in Victoria); selection - same as chiropractic.
- **Disability Studies:** only degree specialising in Disability in Victoria. Support people with a disability and the community in education, policy, case management, recreation. Selection by ENTER (52.45 in 2008).
- **Laboratory Medicine:** - provides a theoretical and practical foundation for employment as medical scientist (eg pathology, medical research) (70.55 in 2008)
- **Nursing:** a 3-year degree to become a registered Division 1 nurse. Selection by ENTER (66.15 in 2008). Can also complete Division 11 nursing at RMIT TAFE.
- **Psychology:** two 3-year degrees available, one in Applied Science, one in Social Science. Selection is by ENTER (81.95 and 86.55 in 2008).



8. LOOKING FOR A TASTE OF HAIR DESIGN?? - Pivot Point International Academy Melbourne -2 Day Introductory Course **Where:**

382 Lonsdale St. Melbourne **When:** 16th -17th April, 9th-10th July, 1st-2nd

October, 2009 **Time:** 9.00-5.00pm ea day **Cost:** \$99.00

What will you learn: Hairdressing career information; hands on styling, drying & long hair techniques; introduction to cutting; introduction to colour; client relations and people skills **Certificate:** Participation Certificate presented once course is completed.

See Mrs. Ingram for enrolment forms.

9. MEGT - Apprenticeships, Traineeships, Employment, Education and Training

has the following apprenticeships available in our area:

DIESEL MECHANIC	DANDENONG	N/A
PARKS & GARDENS	NARRE WARREN STH	N/A
PLASTERING	PAKENHAM	LIVE LOCAL

For further information on the above please speak to Mrs. Ingram ASAP.

I hope you have enjoyed the fourth edition of the KOOWEE CAREERS NEWSLETTER. Please see me if you have any queries or require further information in relation to anything mentioned above or would just like to drop in for a chat.

PLEASE SAVE THIS AND FURTHER EDITIONS TO YOUR WORKSPACE FOR FUTURE REFERENCE!!!!!!!!!!!!!!

Talk Soon,
MRS. INGRAM.