

Koo Wee Rup Secondary College (7955)

2008 School Level Report

Please check the data in this report. If, after comparing it with your own records, you deem it to be incorrect or incomplete, follow the directions on the following website:

- <http://www.education.vic.gov.au/management/schoolimprovement/performancecd/>
then select 'School Performance Reports'.

Contents

	Page No.
Privacy	3
SFO Density and LBOTE	4
Teacher Judgments against the VELs	5-13
NAPLAN - Reading	14
- Writing	15
- Numeracy	16
AIM - Reading	17
- Mathematics	18
VCE	19-23
VET	24
VCAL	25
Teacher Assessment of Student Progress (PSD students)	26-27
Enrolment	28
Student Retention - Apparent	29
- Real	30
Exit Destination	31-34
Student Absence	35
Opinion Surveys - Parent	36
- Staff	37
Performance & Development Culture	38
Staff Sick Leave	39
Teaching Staff Retention	40
Bank Balances	41

Privacy

When reporting on the school's performance to the school community, care must be taken to avoid the disclosure of information that can directly or indirectly identify an individual. This may be a particular issue when reporting on the achievement of specific cohorts of students or the opinions of staff where there are small numbers.

In situations where privacy cannot be assured, schools may wish to report on the mean result or provide a written comment on school, year level or cohort performance.

Where the School Level Report is provided to school council members as part of any annual reporting process, or used for discussion on a school's performance, such as in consultation with the school community in the school self-evaluation process, it is important to remind school community members of their duty to only use this information for the purpose it was provided, and that the material must be kept confidential.

It is important to note that information that identifies an individual or can be used with other readily available information to identify a person is now protected by the *Information Privacy Act 2000* (<http://www.education.vic.gov.au/about/deptpolicies/informationprivacy.htm>).

SFO Density and LBOTE

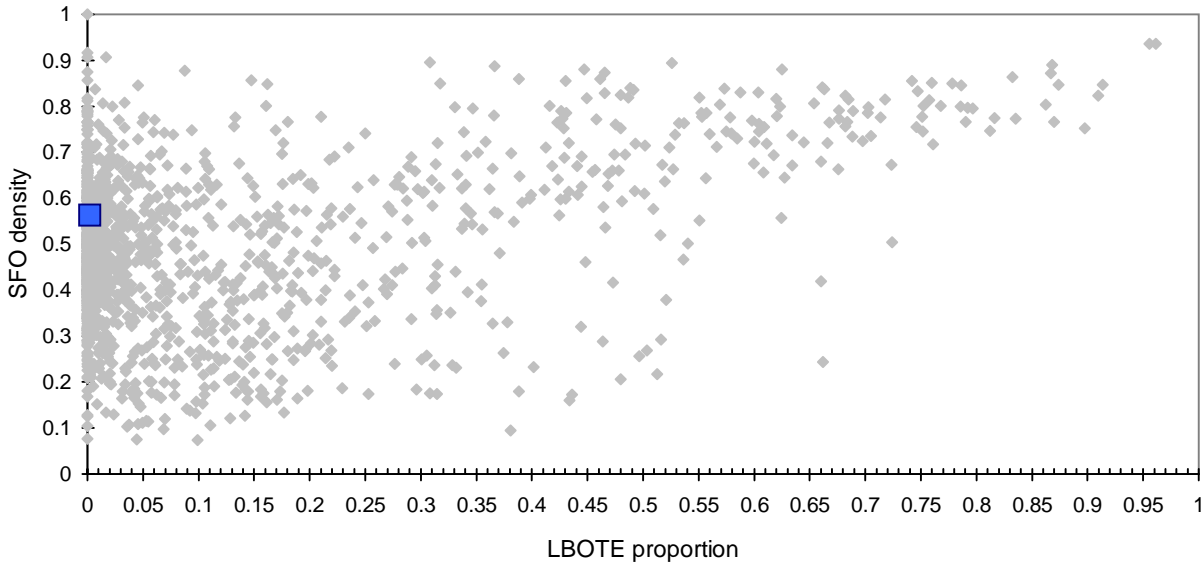
School no: 7955

School name: Koo Wee Rup Secondary College

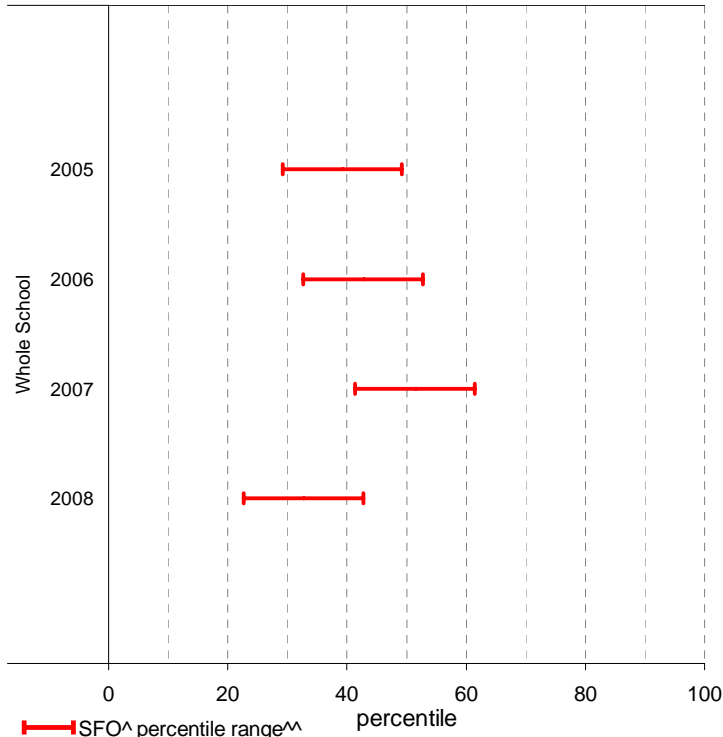
Explanation: The chart below plots the school's 2008 SFO (Student Family Occupation) density[^] and LBOTE (Language Background Other Than English) proportion* against that of all government schools. This school is highlighted as a square on the chart.

	2001	2002	2003	2004	2005	2006	2007	2008
SFO density [^] :					0.51	0.50	0.48	0.56
LBOTE proportion*:	0.00	0.00	0.00	0.00	0.00	0.00	0.00	0.00

School's 2008 SFO density and LBOTE proportion against that of all government schools



School's SFO[^] percentile range^{^^} over time



Notes: [^] The higher the SFO density, the lower the SFO percentile and the lower the socio-economic status (SES).
^{^^} The school's SFO percentile range shows the 20% of schools with an SFO Density most like this school.
* From 2007, a student is LBOTE if either the student or one parent/guardian speaks a language other than English at home. Prior to 2007, a student is LBOTE if the student or one of the parents was born in a non-English speaking country.

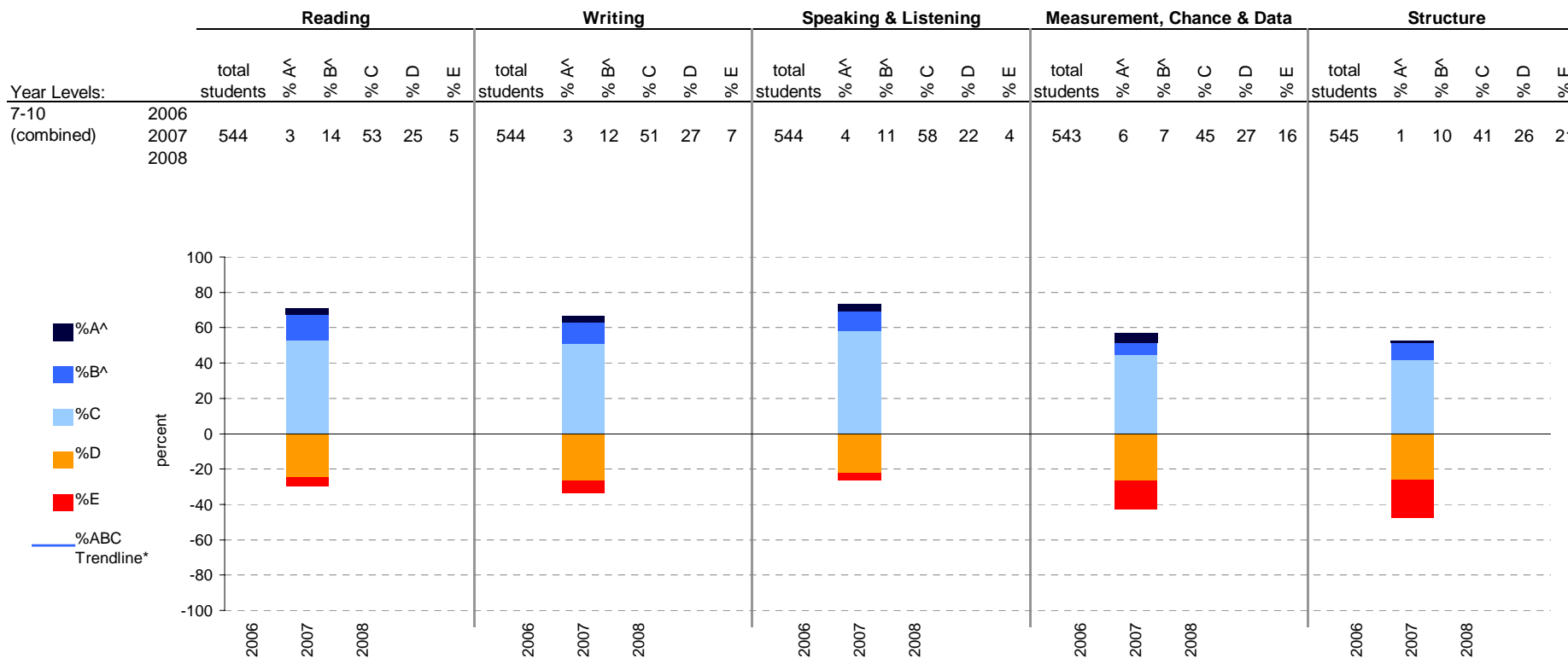
Teacher Judgments against the VELS - Year levels 7-10 combined

School no: 7955

School name: Koo Wee Rup Secondary College

Source of data: Data retrieved electronically from CASES21.

Explanation: Teacher judgments of student achievement against the VELS.



Notes: * The school trendline is being trialled. It is only plotted when there is data for each calendar year.
 ^ The cutoff between grades A and B changed in 2007. Further information is available on the following website:
<http://www.education.vic.gov.au/studentlearning/studentreports/schools/whatsnew.htm>.

Teacher Judgments against the VELS - English (secondary)

School no: 7955

School name: Koo Wee Rup Secondary College

Source of data: Data retrieved electronically from CASES21.

Explanation: Teacher judgments of student achievement against the VELS.

Notes: * The school trendline is only plotted when there is data for each calendar year.

** In 2006, approx. 850 schools assessed their students against the 0.25 VELS scale. 2006 benchmarks are therefore based on a subset of schools.

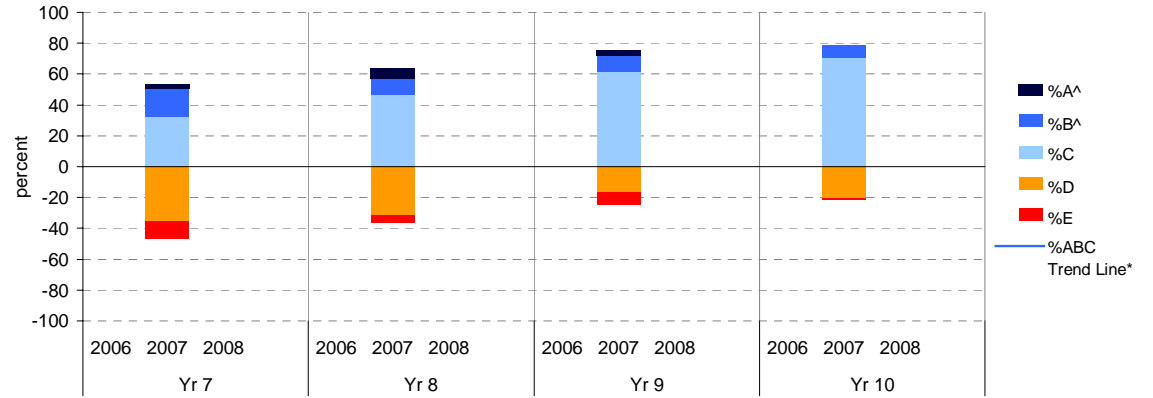
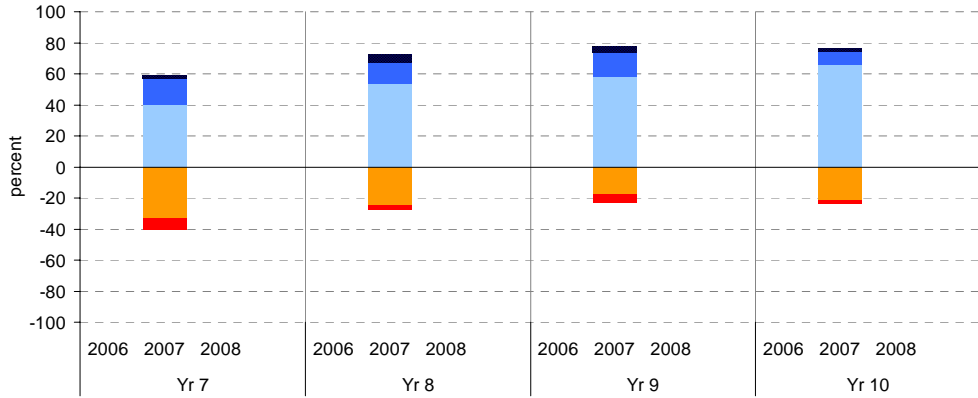
^ The cutoff between grades A and B changed in 2007. Further information is available on the following website: <http://www.education.vic.gov.au/studentlearning/studentreports/schools/whatsnew.htm>.

Reading

	total students	% of students by grade					Mean Score		total students	total students	% of students by grade					Mean Score				
		A^	B^	C	D	E	School	State**			A^	B^	C	D	E	School	State**			
Yr 7	2006						4.32	4.32	2006	141						5.26	5.26			
	2007	162	2	17	40	33	7	4.22			4.39	2007	162	4	16	58	17	6	5.33	5.36
	2008										2008									
Yr 8	2006						4.78	4.78	2006	102						5.77	5.77			
	2007	139	5	14	53	24	3	4.83			4.85	2007	102	2	9	66	22	2	5.85	5.85
	2008										2008									

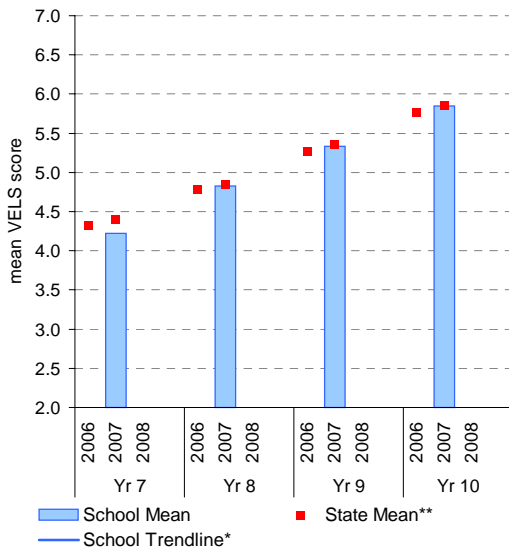
Writing

	total students	% of students by grade					Mean Score		total students	total students	% of students by grade					Mean Score				
		A^	B^	C	D	E	School	State**			A^	B^	C	D	E	School	State**			
Yr 7	2006						4.28	4.28	2006	141						5.25	5.25			
	2007	162	2	19	32	35	12	4.17			4.36	2007	141	3	11	62	17	8	5.30	5.34
	2008										2008									
Yr 8	2006						4.75	4.75	2006	102						5.75	5.75			
	2007	139	6	10	47	32	5	4.75			4.83	2007	102	0	8	71	21	1	5.81	5.83
	2008										2008									

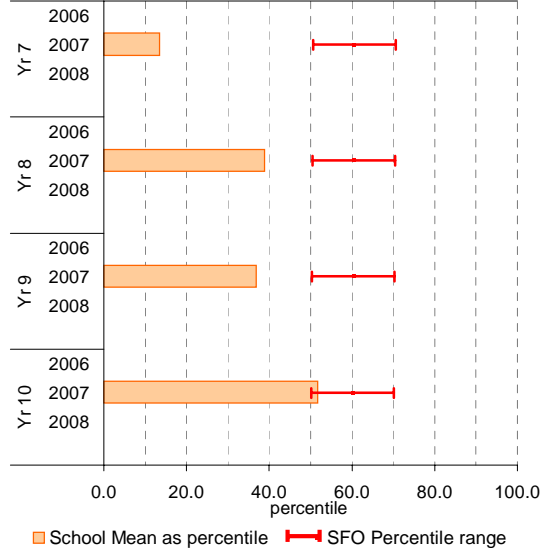


Reading

School Mean against State Mean

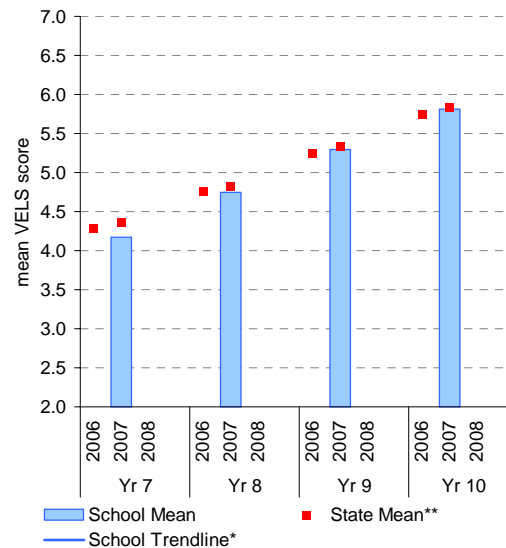


School Mean as percentile against SFO percentile range

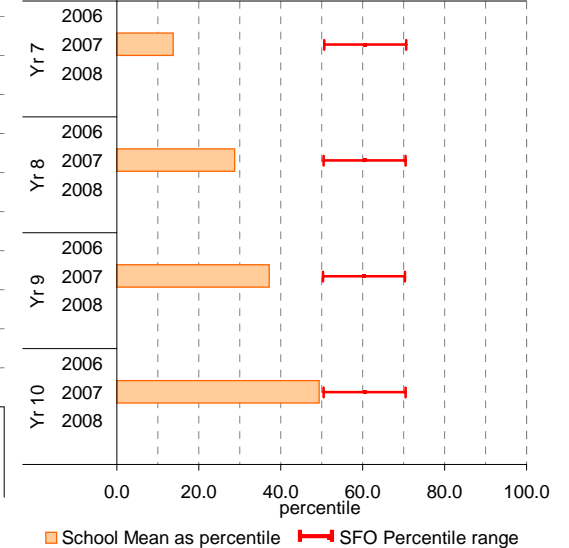


Writing

School Mean against State Mean



School Mean as percentile against SFO percentile range



Teacher Judgments against the VELS - English (secondary)

School no: 7955

School name: Koo Wee Rup Secondary College

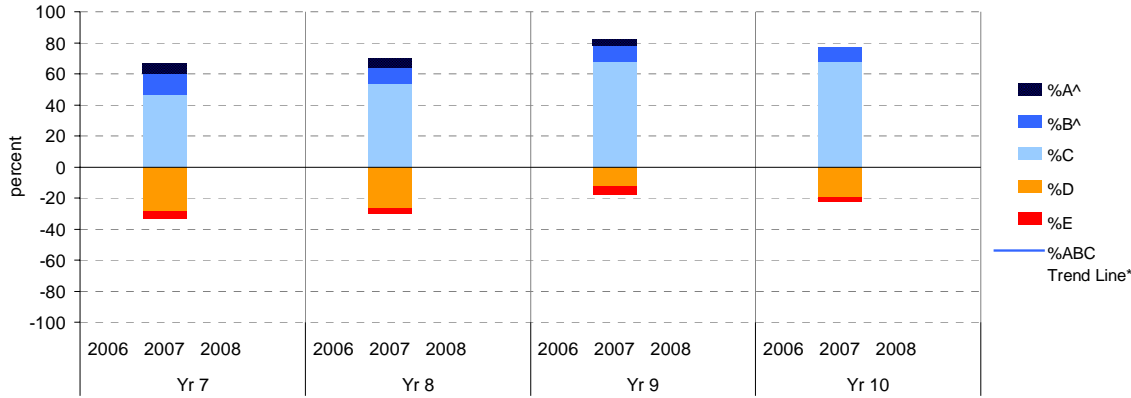
Source of data: Data retrieved electronically from CASES21.

Explanation: Teacher judgments of student achievement against the VELS.

Notes: * The school trendline is only plotted when there is data for each calendar year.
 ** In 2006, approx. 850 schools assessed their students against the 0.25 VELS scale. 2006 benchmarks are therefore based on a subset of schools.
 ^ The cutoff between grades A and B changed in 2007. Further information is available on the following website:
<http://www.education.vic.gov.au/studentlearning/studentreports/schools/whatsnew.htm>.

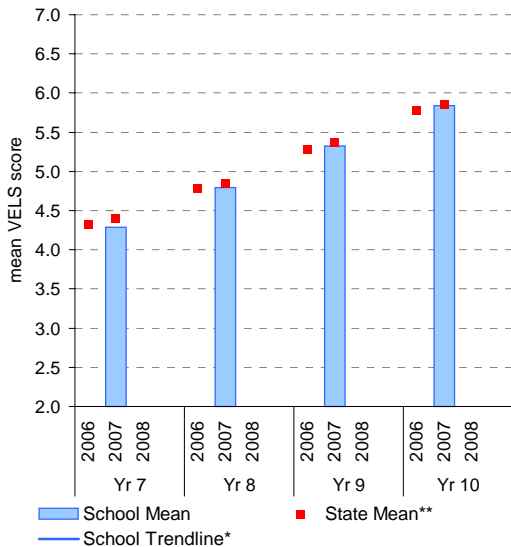
Speaking and Listening

	total students	% of students by grade					Mean Score		total students	% of students by grade	Mean Score							
		A^	B^	C	D	E	School	State**			A^	B^	C	D	E	School	State**	
Yr 7	2006						4.33	4.33	2006						5.28	5.28		
	2007	162	6	14	46	28	4.29	4.39		2007	141	4	11	68	12	6	5.33	5.36
	2008									2008								
Yr 8	2006						4.79	4.79	2006						5.78	5.78		
	2007	139	6	10	54	27	4.79	4.85		2007	102	0	10	68	20	3	5.84	5.85
	2008									2008								

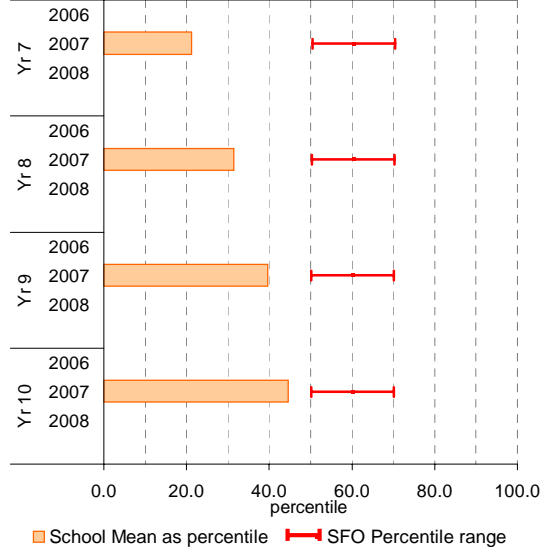


Speaking and Listening

School Mean against State Mean



School Mean as percentile against SFO percentile range



Teacher Judgments against the VELS - Mathematics (secondary)

School no: 7955

School name: Koo Wee Rup Secondary College

Source of data: Data retrieved electronically from CASES21.

Explanation: Teacher judgments of student achievement against the VELS.

Notes: * The school trendline is only plotted when there is data for each calendar year.

** In 2006, approx. 850 schools assessed their students against the 0.25 VELS scale. 2006 benchmarks are therefore based on a subset of schools.

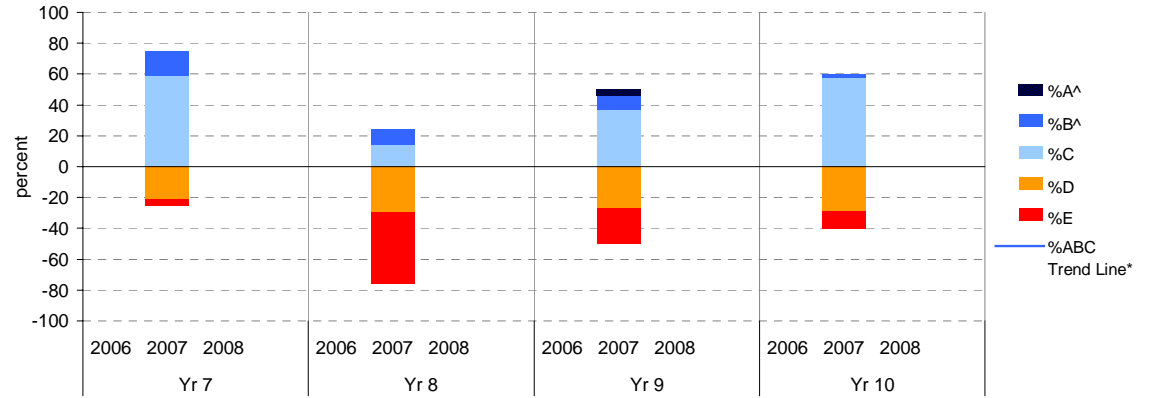
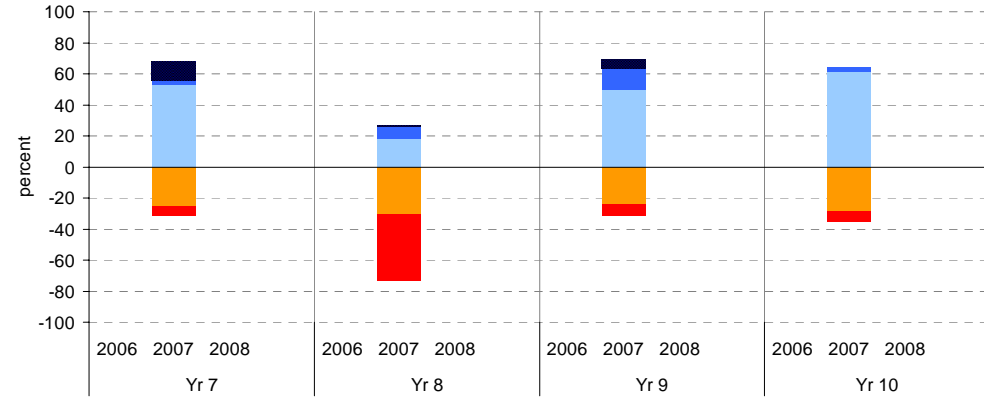
^ The cutoff between grades A and B changed in 2007. Further information is available on the following website: <http://www.education.vic.gov.au/studentlearning/studentreports/schools/whatsnew.htm>.

Measurement, Chance and Data

	total students	% of students by grade					Mean Score			total students	% of students by grade					Mean Score		
		A^	B^	C	D	E	School	State**			A^	B^	C	D	E	School	State**	
Yr 7	2006						4.25	4.40		2006						5.24	5.34	
	2007	161	13	2	53	25	6		2007	139	6	14	50	24	7			
	2008									2008								
Yr 8	2006						4.78			2006						5.66		
	2007	141	1	8	18	30	43	4.29	4.83	2007	102	0	3	62	28	7	5.64	5.76
	2008									2008								

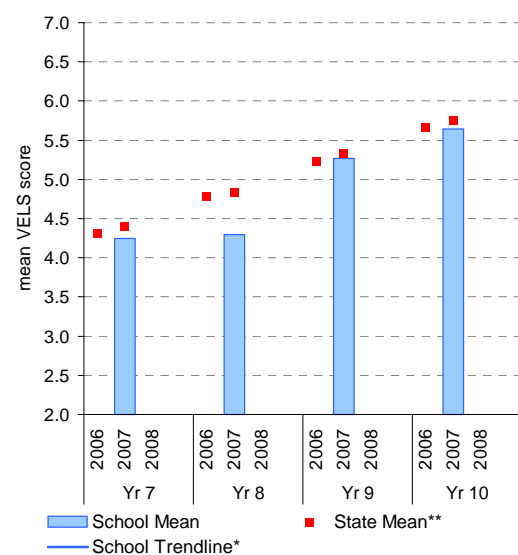
Structure

	total students	% of students by grade					Mean Score			total students	% of students by grade					Mean Score		
		A^	B^	C	D	E	School	State**			A^	B^	C	D	E	School	State**	
Yr 7	2006						4.30	4.39		2006						5.21	5.29	
	2007	161	0	16	59	21	4	4.25	4.39	2007	141	4	9	37	27	23	5.06	5.29
	2008									2008								
Yr 8	2006						4.74			2006						5.60		
	2007	141	0	10	14	30	46	4.25	4.82	2007	102	0	2	58	28	12	5.59	5.72
	2008									2008								

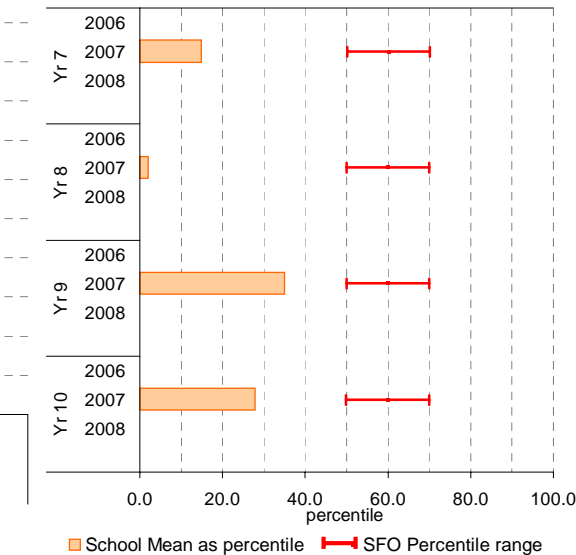


Measurement, Chance and Data

School Mean against State Mean

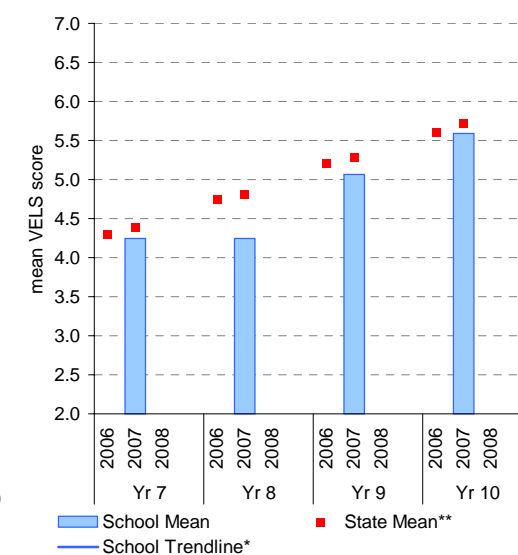


School Mean as percentile against SFO percentile range

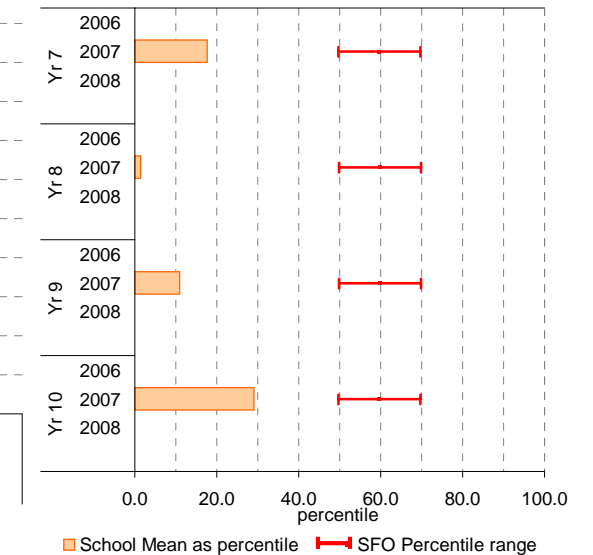


Structure

School Mean against State Mean



School Mean as percentile against SFO percentile range



Teacher Judgments against the VELS - English (secondary)

School no: 7955
School name: Koo Wee Rup Secondary College
Source of data: Data retrieved electronically from CASES21.
Explanation: Teacher judgments of student achievement against the VELS.

Writing

Year Level	Year	Total ¹	Assessed ²	Level 1			Level 2			Level 3			Level 4			Level 5			Level 6			Level 6E			School mean	State mean*	Difference between school and state mean*			
				0.00	0.50	1.00	1.25	1.50	1.75	2.00	2.25	2.50	2.75	3.00	3.25	3.50	3.75	4.00	4.25	4.50	4.75	5.00	5.25	5.50				5.75	6.00	6.25
yr7	2008																													
yr7	2007	162	162								1	6	12	23	34	31	21	30	4									4.17	4.36	-0.19
yr7	2006																										4.28			
yr8	2007	139	139								1			2	4	17	27	32	33	14	9							4.75	4.83	-0.08
yr9	2008																													
yr7	2005																													
yr8	2006																											4.75		
yr9	2007	141	141									1	1		7	2	7	17	29	58	15	2	2				5.30	5.34	-0.04	
yr10	2008																													
yr8	2005																													
yr9	2006																											5.25		
yr10	2007	103	102														1	9	12	29	43	8				5.81	5.83	-0.01		
yr9	2005																													
yr10	2006																												5.75	
yr10	2005																													

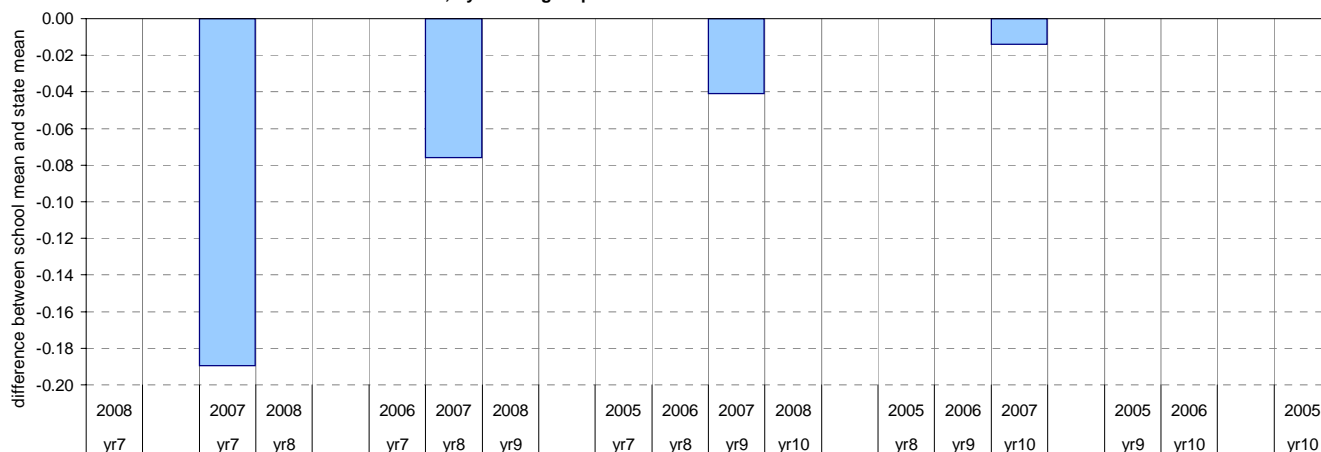
shading indicates a 'C' grade (at the expected standard) on the VELS scale.

¹ The total number of students eligible to be assessed. This figure will typically match, or be very close to, the Year Level enrolment.

² The number of students assessed against the VELS. The difference between this figure and the total (1) should be accounted for by students assessed against Individual Learning Plans and/or the ESL companion in the case of English.

* Note: In 2006, approx. 850 schools assessed their students against the 0.25 VELS scale. 2006 benchmarks are therefore based on a subset of schools.

Difference between school mean and state mean*, by cohort group



NAPLAN Year 7 and 9: Reading

School no: 7955

School name: Koo Wee Rup Secondary College

Source of data: Victorian Curriculum and Assessment Authority.

Explanation: The National Assessment Program - Literacy and Numeracy (NAPLAN) is conducted each year for students in Years 3, 5, 7 and 9. For more detailed NAPLAN data, refer to the NAPLAN Data Service website at <http://naplands.vcaa.vic.edu.au>. A reference guide for analysing NAPLAN data is available at <http://www.vcaa.vic.edu.au/vcaa/prep10/naplan/schools/analysingnaplandata.pdf>.

Notes: * % student participation = (students who participated in NAPLAN / February enrolments) * 100

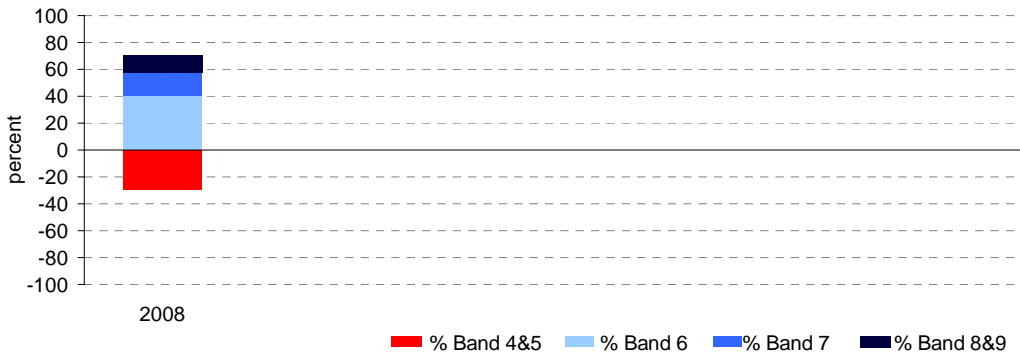
Year 7

	student participation		Percent of students by NAP Band						Mean Scaled Score	
	(n)	(%)*	Band 4	Band 5	Band 6	Band 7	Band 8	Band 9	School	State
2008	182	95	7	23	40	18	8	5	508.6	531.1

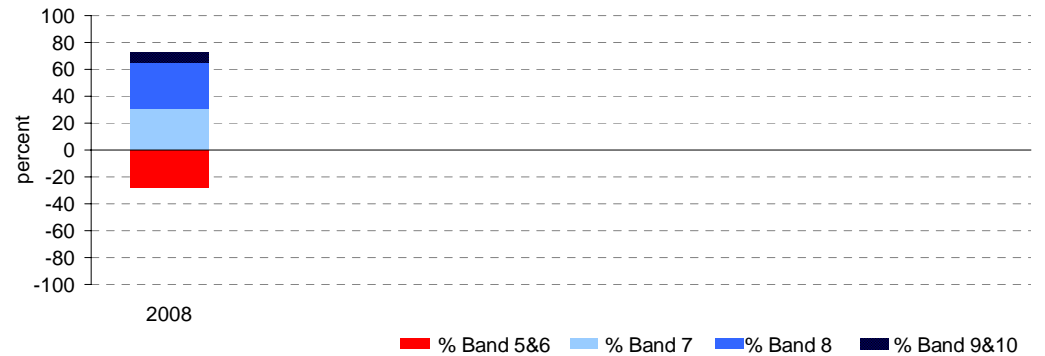
Year 9

	student participation		Percent of students by NAP Band						Mean Scaled Score	
	(n)	(%)*	Band 5	Band 6	Band 7	Band 8	Band 9	Band 10	School	State
2008	124	88	11	16	31	35	4	3	563.1	572.5

Percent of students by NAP Band

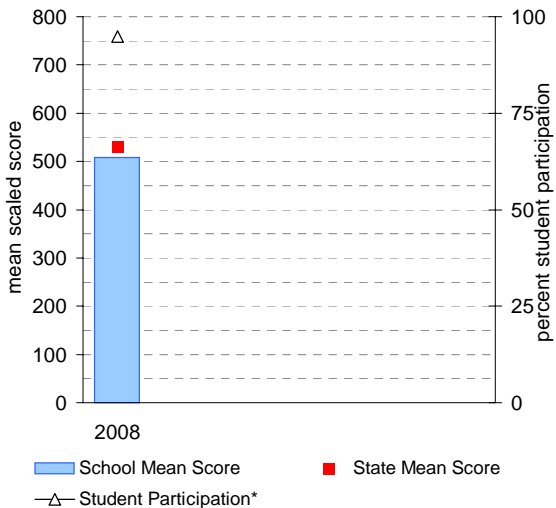


Percent of students by NAP Band

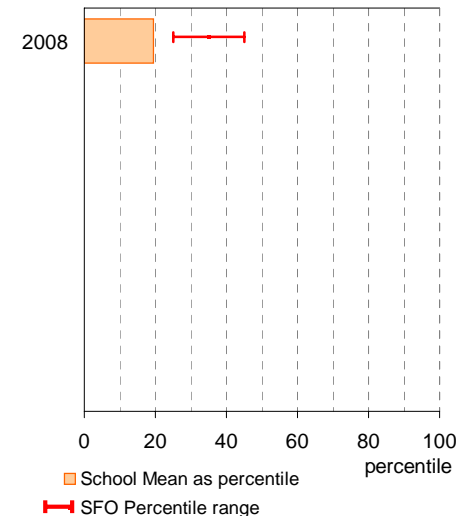


Year 7

School Mean against State Mean, including Participation

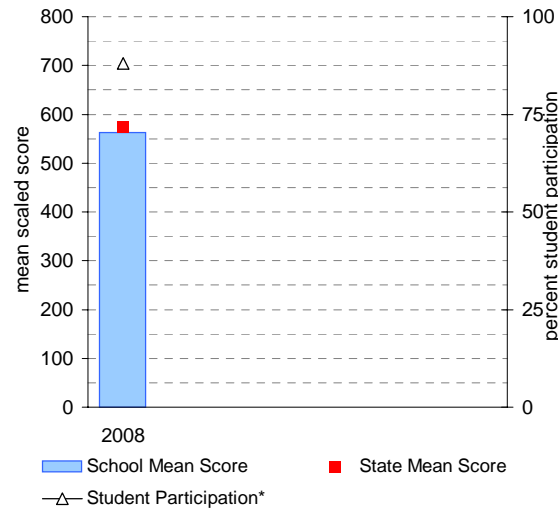


School Mean as percentile against SFO percentile range

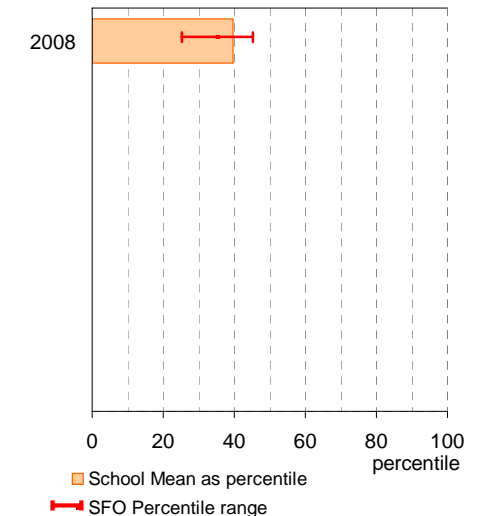


Year 9

School Mean against State Mean, including Participation



School Mean as percentile against SFO percentile range



NAPLAN Year 7 and 9: Writing

School no: 7955

School name: Koo Wee Rup Secondary College

Source of data: Victorian Curriculum and Assessment Authority.

Explanation: The National Assessment Program - Literacy and Numeracy (NAPLAN) is conducted each year for students in Years 3, 5, 7 and 9. For more detailed NAPLAN data, refer to the NAPLAN Data Service website at <http://naplands.vcaa.vic.edu.au>. A reference guide for analysing NAPLAN data is available at <http://www.vcaa.vic.edu.au/vcaa/prep10/naplan/schools/analysingnaplandata.pdf>.

Notes: * % student participation = (students who participated in NAPLAN / February enrolments) * 100

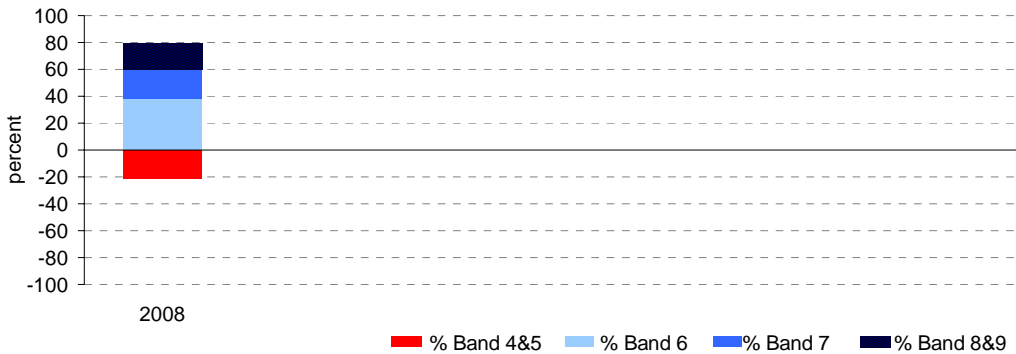
Year 7

	student participation		Percent of students by NAP Band						Mean Scaled Score	
	(n)	(%)*	Band 4	Band 5	Band 6	Band 7	Band 8	Band 9	School	State
2008	182	95	9	12	38	22	13	7	518.6	534.0

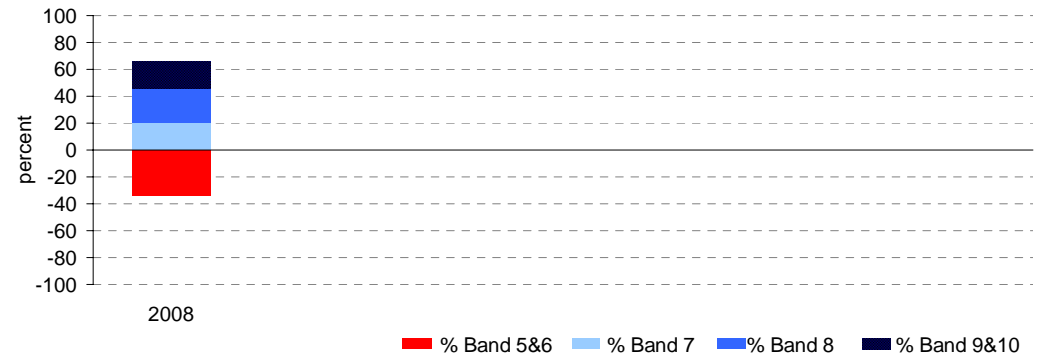
Year 9

	student participation		Percent of students by NAP Band						Mean Scaled Score	
	(n)	(%)*	Band 5	Band 6	Band 7	Band 8	Band 9	Band 10	School	State
2008	116	82	12	22	20	26	10	11	565.6	571.4

Percent of students by NAP Band

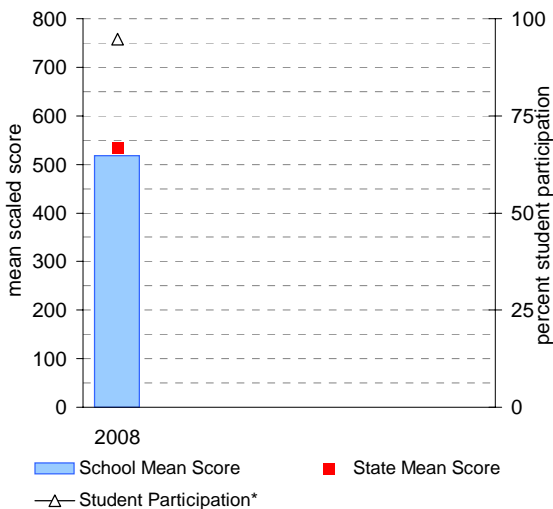


Percent of students by NAP Band

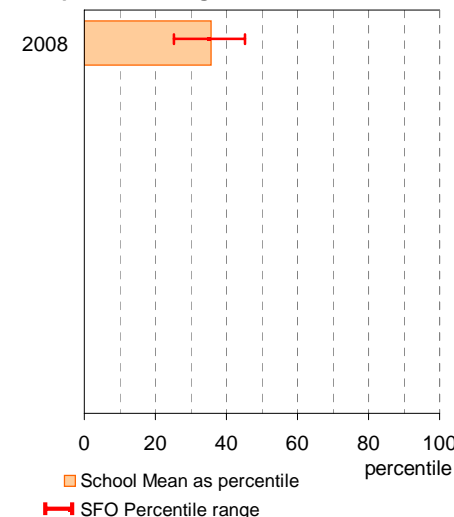


Year 7

School Mean against State Mean, including Participation

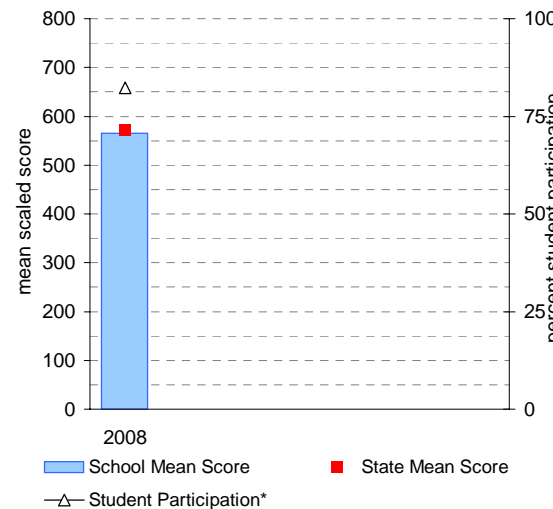


School Mean as percentile against SFO percentile range

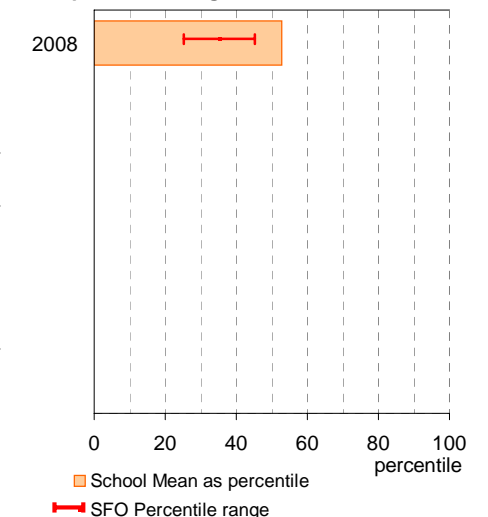


Year 9

School Mean against State Mean, including Participation



School Mean as percentile against SFO percentile range



NAPLAN Year 7 and 9: Numeracy

School no: 7955

School name: Koo Wee Rup Secondary College

Source of data: Victorian Curriculum and Assessment Authority.

Explanation: The National Assessment Program - Literacy and Numeracy (NAPLAN) is conducted each year for students in Years 3, 5, 7 and 9. For more detailed NAPLAN data, refer to the NAPLAN Data Service website at <http://naplands.vcaa.vic.edu.au>. A reference guide for analysing NAPLAN data is available at <http://www.vcaa.vic.edu.au/vcaa/prep10/naplan/schools/analysingnaplandata.pdf>.

Notes: * % student participation = (students who participated in NAPLAN / February enrolments) * 100

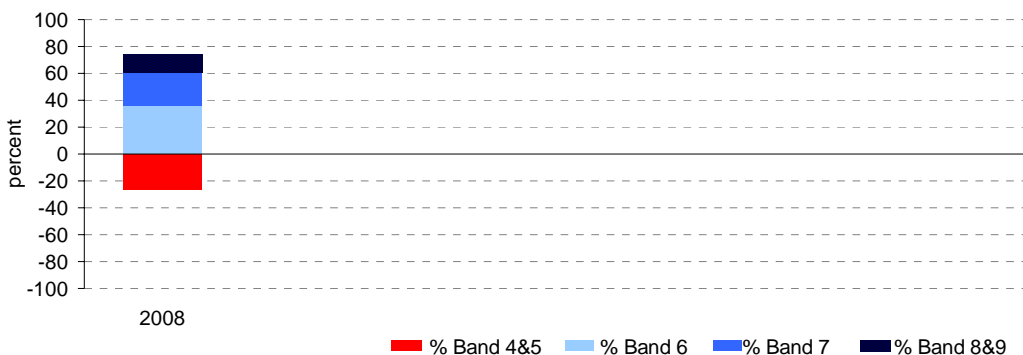
Year 7

	student participation		Percent of students by NAP Band						Mean Scaled Score	
	(n)	(%)*	Band 4	Band 5	Band 6	Band 7	Band 8	Band 9	School	State
2008	182	95	2	24	36	25	9	4	517.8	541.2

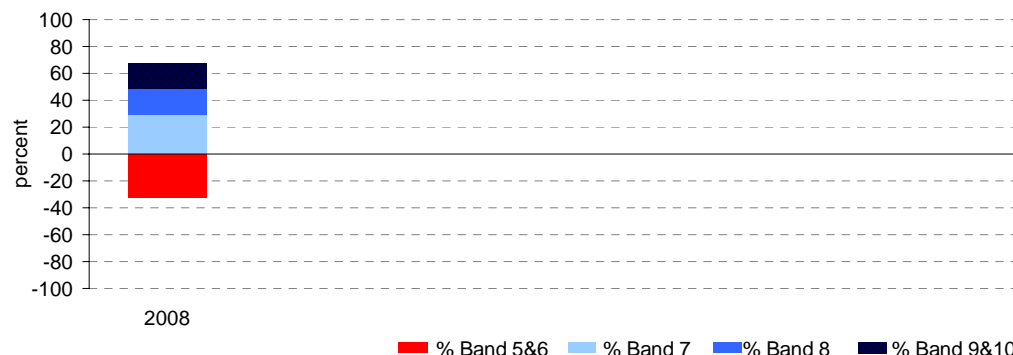
Year 9

	student participation		Percent of students by NAP Band						Mean Scaled Score	
	(n)	(%)*	Band 5	Band 6	Band 7	Band 8	Band 9	Band 10	School	State
2008	123	87	12	20	29	20	16	2	566.3	579.0

Percent of students by NAP Band

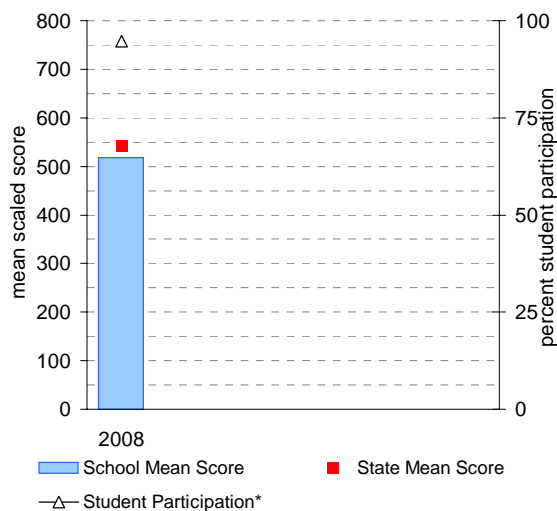


Percent of students by NAP Band

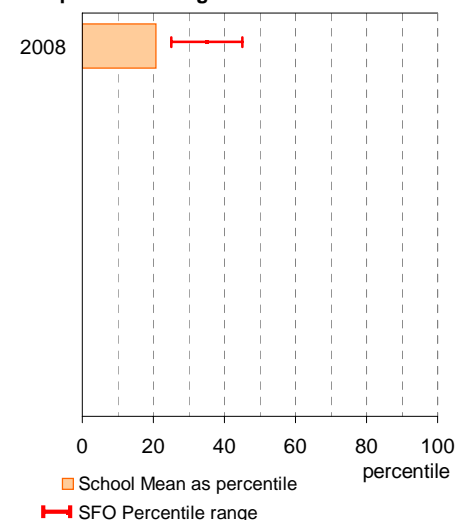


Year 7

School Mean against State Mean, including Participation

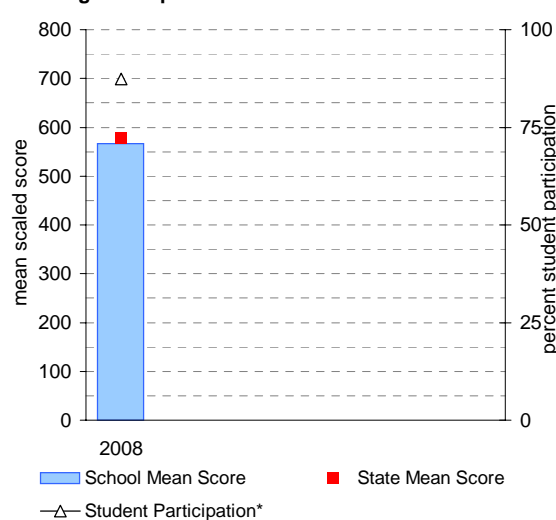


School Mean as percentile against SFO percentile range

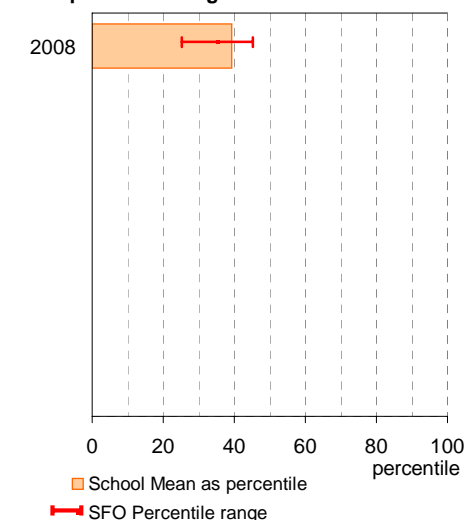


Year 9

School Mean against State Mean, including Participation



School Mean as percentile against SFO percentile range



AIM Year 7 and 9: Reading

School no: 7955

School name: Koo Wee Rup Secondary College

Source of data: Victorian Curriculum and Assessment Authority.

Explanation: The Achievement Improvement Monitor (AIM) was a statewide assessment program conducted each year up until and including 2007 for students in Years 3, 5, 7 and 9. This has now been replaced by NAPLAN. For more detailed AIM data, refer to the AIM Data Service website at <http://aimds.vcaa.vic.edu.au>.

Notes: * The school trendline is only plotted when there is data for each calendar year.

** % student participation = (students who participated in AIM / Feb enrolments) * 100

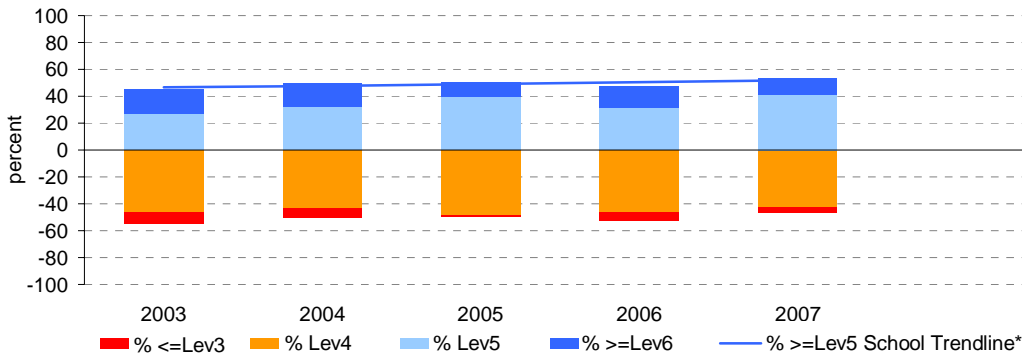
Year 7

	student participation		Percent of students by VELs level								Mean CSF / VELs Score	
	(n)	(%)**	Lev1	Lev2	Lev3	Lev4	Lev5	Lev6	Lev6E	School	State	
2003	150	82	0	0	9	46	27	19	0	4.1	4.1	
2004	161	96	0	0	7	43	32	18	0	4.1	4.2	
2005	156	92	0	0	1	49	40	10	0	4.2	4.2	
2006	141	89	0	1	6	46	32	16	0	4.1	4.2	
2007	156	95	0	0	4	42	41	12	0	4.1	4.1	

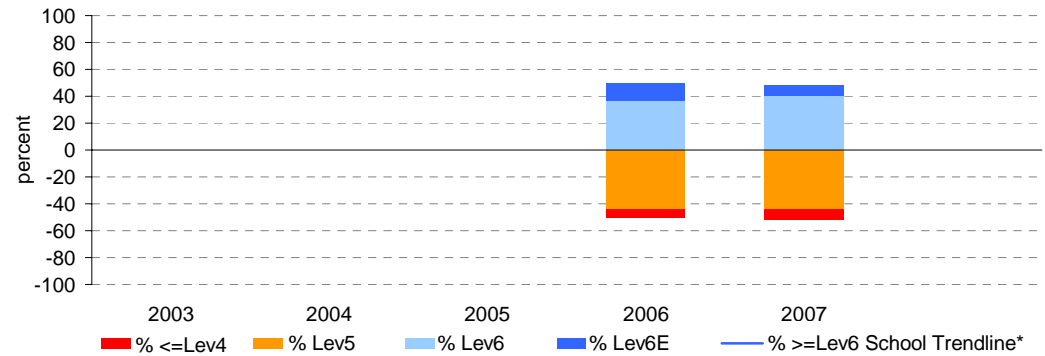
Year 9

	student participation		Percent of students by VELs level								Mean CSF / VELs Score	
	(n)	(%)**	Lev1	Lev2	Lev3	Lev4	Lev5	Lev6	Lev6E	School	State	
2003												
2004												
2005												
2006	167	98	0	0	0	7	44	37	13	5.0	5.1	
2007	137	92	0	0	0	8	44	40	8	5.0	5.1	

Percent of students by VELs level

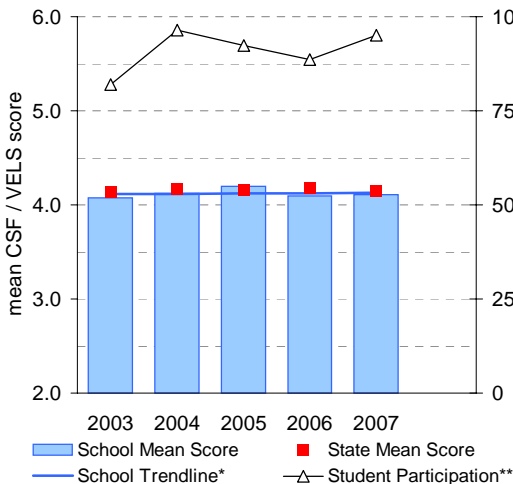


Percent of students by VELs level

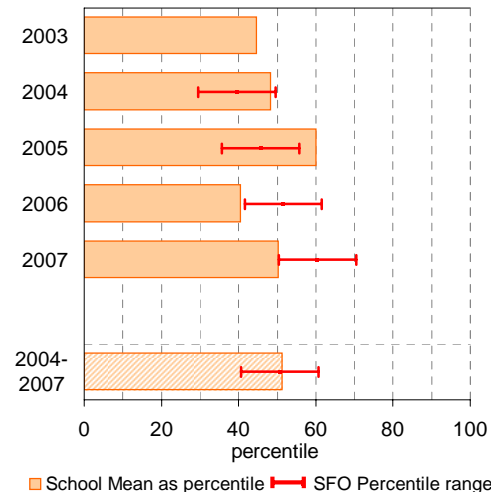


Year 7

School Mean against State Mean, including Participation

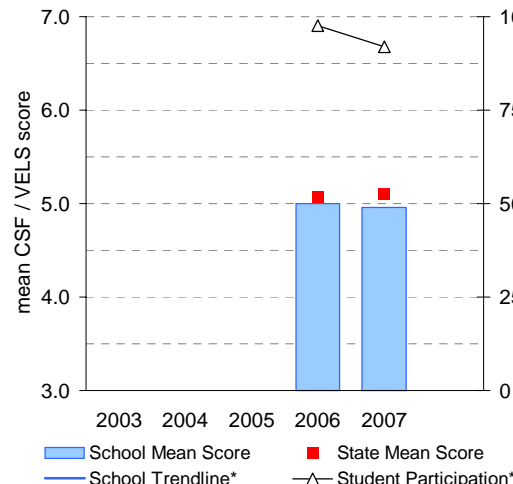


School Mean as percentile against SFO percentile range

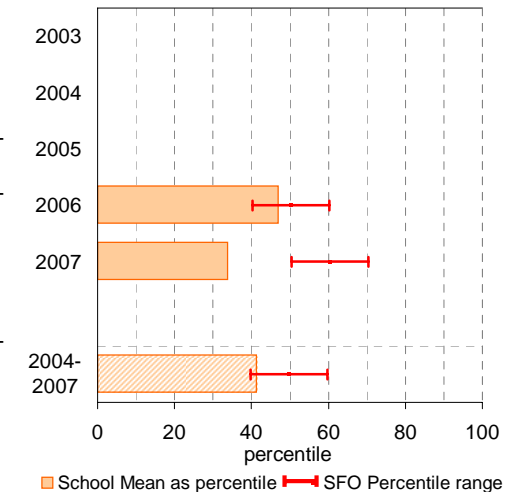


Year 9

School Mean against State Mean, including Participation



School Mean as percentile against SFO percentile range



AIM Year 7 and 9: Mathematics

School no: 7955

School name: Koo Wee Rup Secondary College

Source of data: Victorian Curriculum and Assessment Authority.

Explanation: The Achievement Improvement Monitor (AIM) was a statewide assessment program conducted each year up until and including 2007 for students in Years 3, 5, 7 and 9. This has now been replaced by NAPLAN. For more detailed AIM data, refer to the AIM Data Service website at <http://aimds.vcaa.vic.edu.au>.

Notes: * The school trendline is only plotted when there is data for each calendar year.
 ** % student participation = (students who participated in AIM / Feb enrolments) * 100

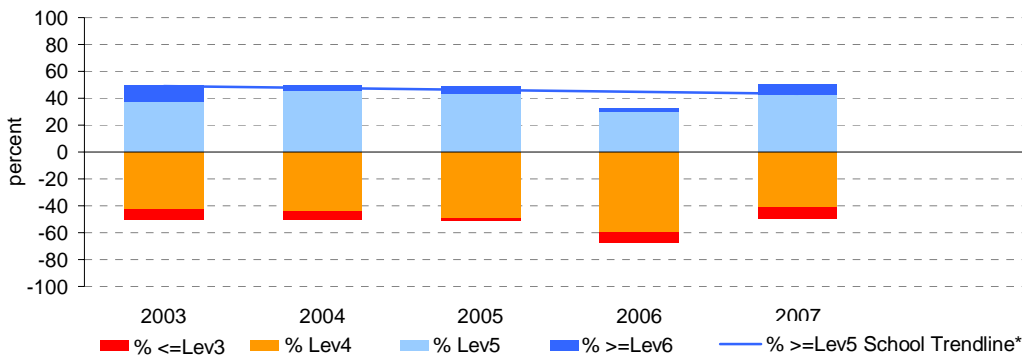
Year 7

	student participation		Percent of students by VELs level							Mean CSF / VELs Score	
	(n)	(%)**	Lev1	Lev2	Lev3	Lev4	Lev5	Lev6	Lev6E	School	State
2003	139	76	0	0	8	42	37	12	0	4.0	4.0
2004	158	95	0	0	6	44	46	4	0	4.0	4.0
2005	153	91	0	0	2	49	43	6	0	4.0	4.0
2006	136	86	0	0	8	60	29	3	0	3.8	4.0
2007	154	94	0	0	8	41	42	8	0	4.0	4.1

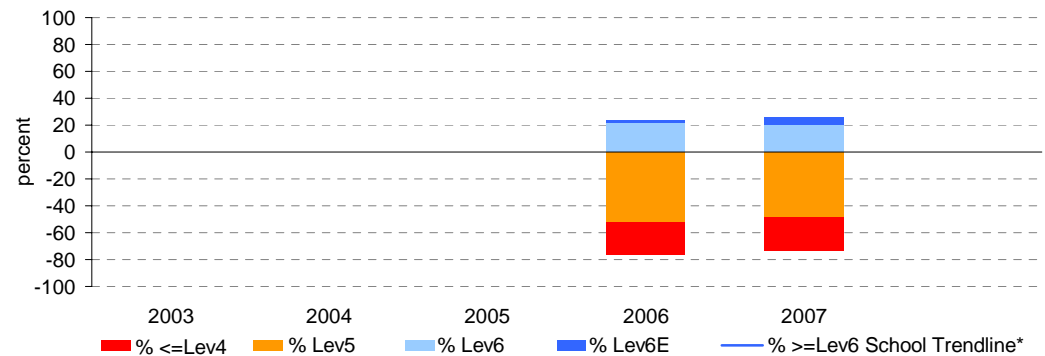
Year 9

	student participation		Percent of students by VELs level							Mean CSF / VELs Score	
	(n)	(%)**	Lev1	Lev2	Lev3	Lev4	Lev5	Lev6	Lev6E	School	State
2003											
2004											
2005											
2006	160	94	0	0	0	24	53	21	2	4.6	4.8
2007	138	93	0	0	0	25	49	20	6	4.6	4.8

Percent of students by VELs level

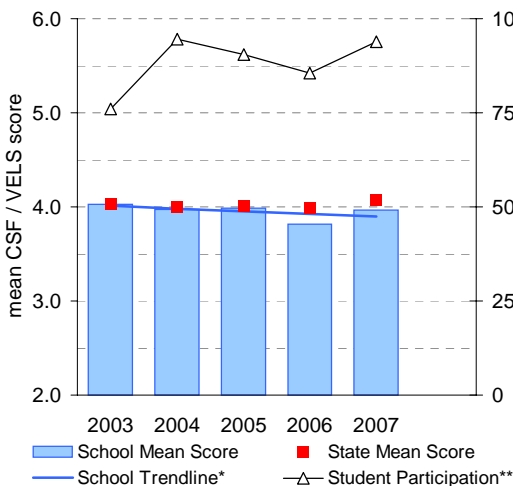


Percent of students by VELs level

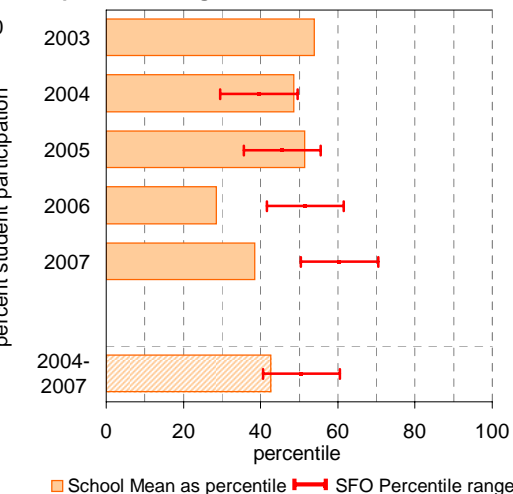


Year 7

School Mean against State Mean, including Participation

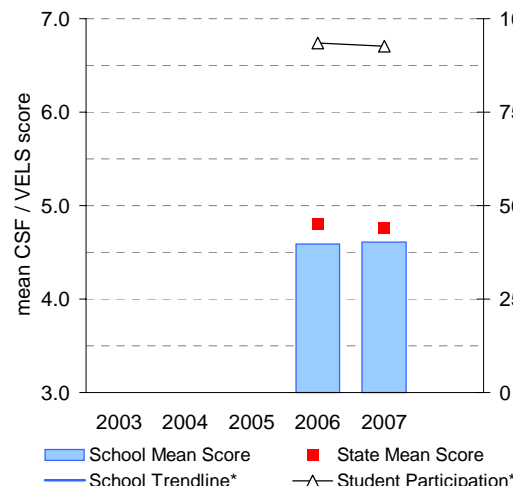


School Mean as percentile against SFO percentile range

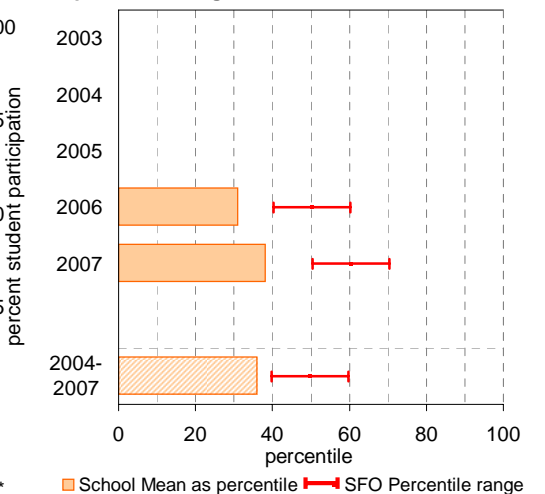


Year 9

School Mean against State Mean, including Participation



School Mean as percentile against SFO percentile range



VCE

School no: 7955

School name: Koo Wee Rup Secondary College

Explanation: Only 2008 studies, which at least 1 student completed, are included.

Source of data: Victorian Curriculum and Assessment Authority.

Notes:	2004		2005		2006		2007		2008	
	No. of students	school mean	No. of students	school mean	No. of students	school mean	No. of students	school mean	No. of students	school mean
- After allstudy, English, Further Maths and Maths Methods, studies are listed in descending order of the number of students in the latest year.										
- From 2005, VET study scores are included.										
- From 2005, data is based on 'reported' study scores, not 'achieved' study scores.										
allstudy		27.8		28.9		27.9		28.0		27.4
English EN01	64	27.5	61	28.9	58	26.9	55	26.8	59	25.8
Further Mathematics MA07	60	30.8	37	30.9	26	30.3	57	30.5	36	29.8
Mathematical Methods MA08	13	30.2	10	30.2	10	25.9	12	26.8	19	24.9
Biology BI03	10	28.0	30	28.2	23	27.6	30	27.1	34	26.9
Psychology PY03	43	25.8	41	29.4	28	27.5	23	28.7	28	30.4
Physical Ed. PE03	12	27.6	16	24.4	16	26.1	20	26.8	24	26.6
Art AR03	32	27.0	14	30.0	7	29.0	14	26.4	21	26.4
Literature LI01	30	24.5	21	29.6	9	27.3	19	24.6	21	24.8
Health & Human Dev. HH03	17	24.1	27	28.3	22	26.2	22	30.2	20	29.6
Australian History HI08	14	30.5			17	30.5			17	29.1
Business Management BM03			13	27.2					13	29.8
Visual Communication & Design VC03	17	29.3	10	24.2	10	24.3	18	25.9	12	25.6
Chemistry CH03	2	27.5	2	25.0	7	25.3	10	28.1	10	27.1
Physics PH03	13	26.8	7	29.9	7	30.0	13	26.2	10	26.2
Studio Arts SA03					16	25.6	15	26.5	10	28.4
Design & Tech. DT03							9	32.4	8	29.9
Geography GE03	21	27.8	29	27.8	8	26.9	14	27.4	8	24.4
IT Applications IT02	1	32.0	8	31.0	5	31.6			5	21.2
Music (VCE VET) MI07									5	28.4
Outdoor & Environmental Studies OS03	16	28.2	11	30.9	13	31.4	8	33.5	5	33.4
Specialist Mathematics MA09	6	21.8	1	26.0			4	24.0	5	24.2
Legal Studies LS03	4	23.5	3	27.0			8	27.4	3	24.7
Dance (VCE VET) DN03									2	30.0
Equine Industry (VCE VET) EQ02					2	34.0			2	28.0
Music Performance: Solo MC02	1	33.0	1	25.0	1	37.0	2	29.5	2	18.5
Accounting AC03	6	36.2	5	34.2	11	28.3	5	30.0	1	27.0
Dance DA03	1	22.0							1	34.0
Engineering Studies (Cert. II) (VCE VET) EG07									1	33.0
Hospitality (Food & Bev.) (VCE VET) HS06									1	32.0
Laboratory Skills (VCE VET) LB18							1	43.0	1	32.0
Multimedia (VCE VET) MU02									1	34.0
Sport & Rec (Community) (VCE VET) SR21									1	30.0

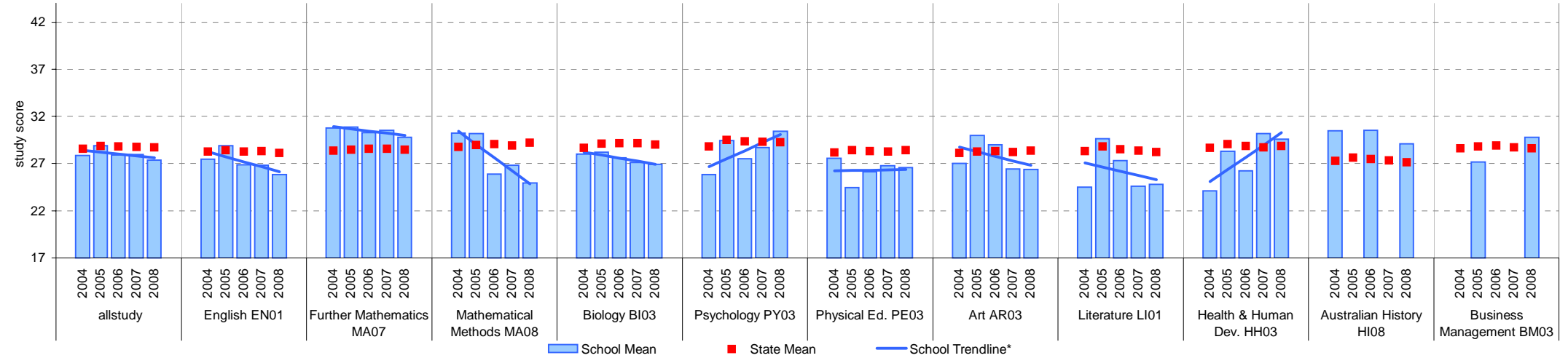
VCE

School no: 7955

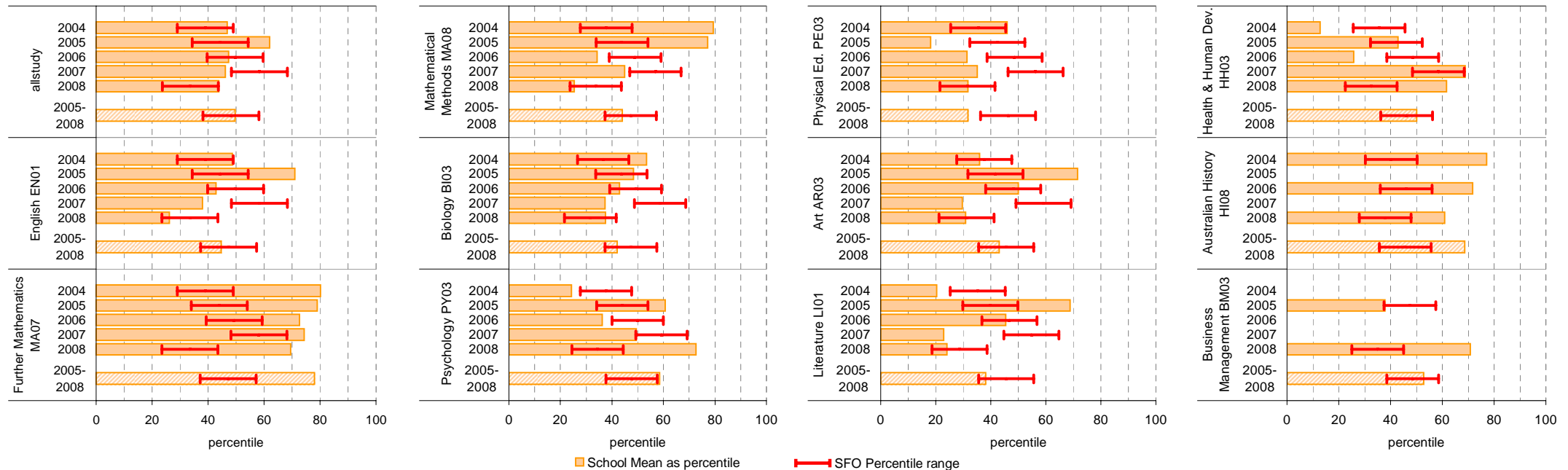
School name: Koo Wee Rup Secondary College

Source of data: Victorian Curriculum and Assessment Authority.

School Mean against State Mean



School Mean as percentile against SFO percentile range



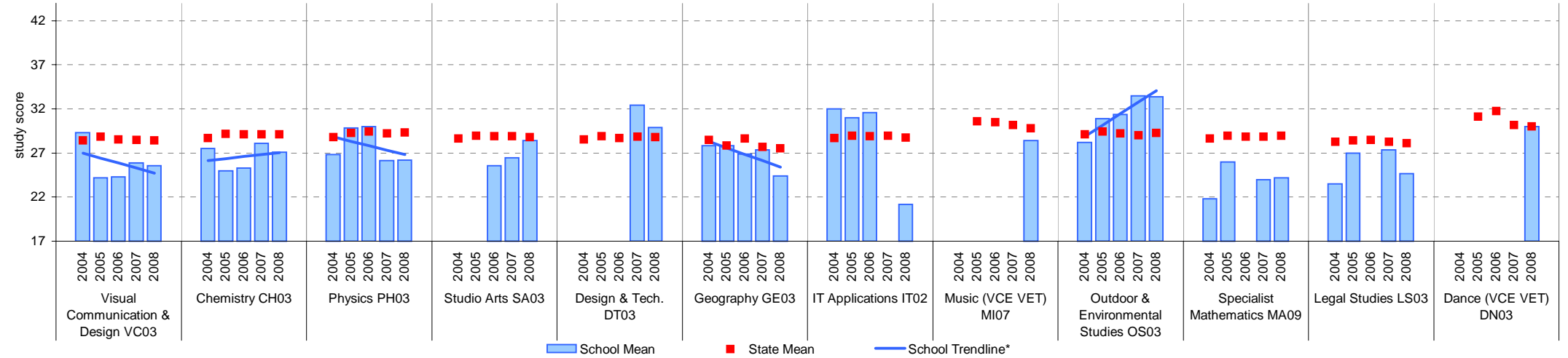
VCE (cont'd)

School no: 7955

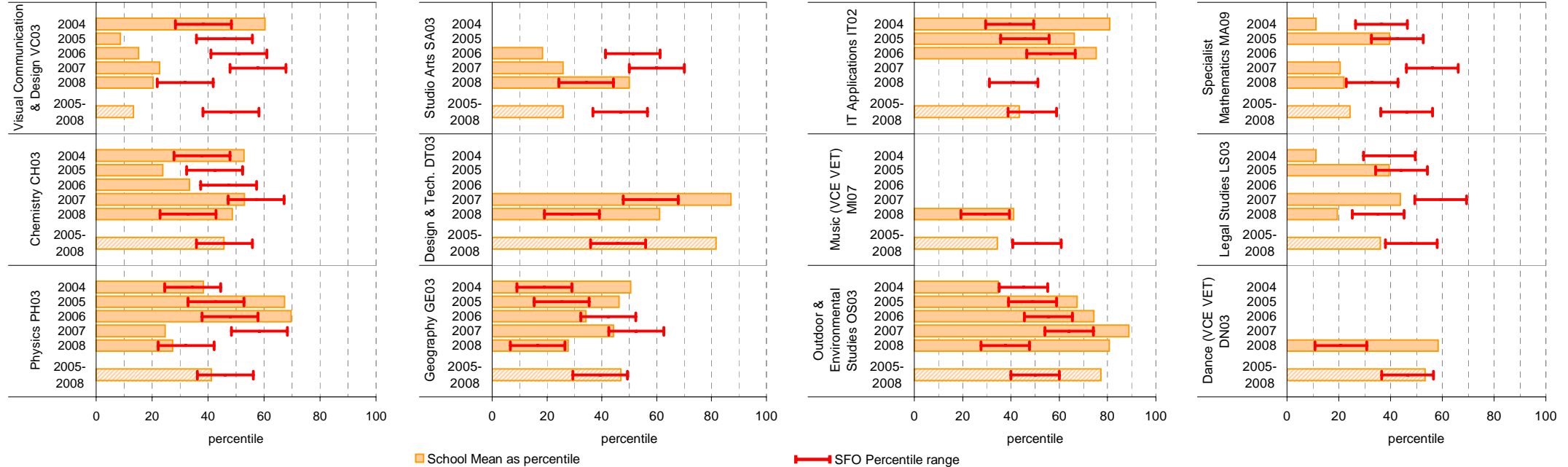
School name: Koo Wee Rup Secondary College

Source of data: Victorian Curriculum and Assessment Authority.

School Mean against State Mean



School Mean as percentile against SFO percentile range



VCE (cont'd)

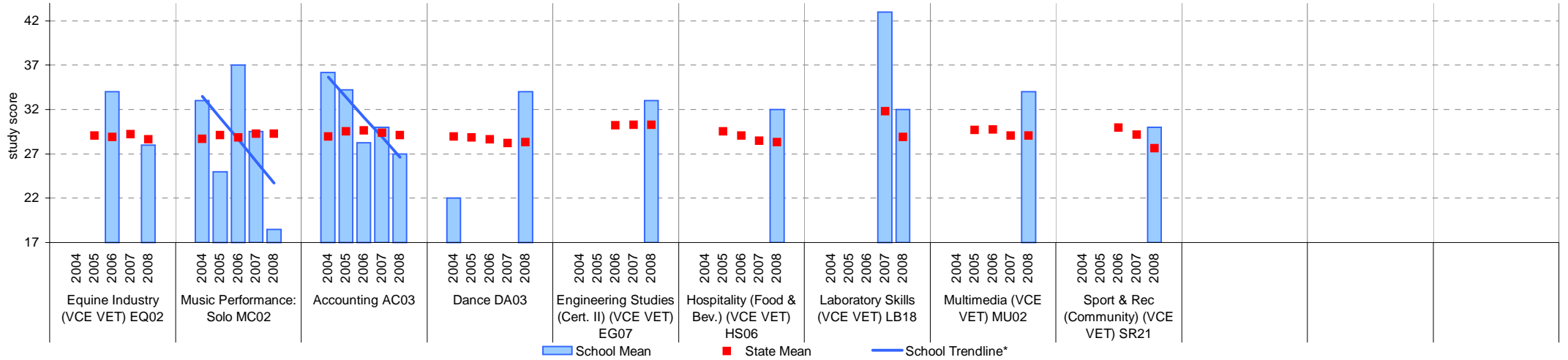
School no: 7955

School name: Koo Wee Rup Secondary College

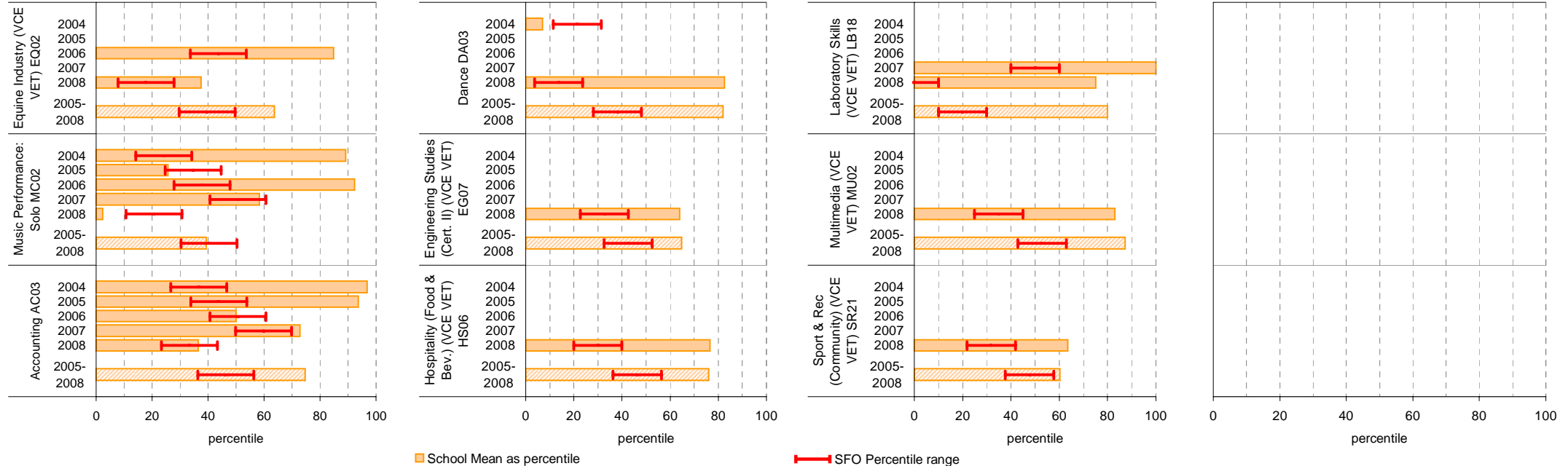
Source of data: Victorian Curriculum and Assessment Authority.

School Mean against State Mean

- Notes:
- * The school trendline is only plotted when there is data for each calendar year.
 - After allstudy, EN01, MA07 and MA08, the remaining studies are charted in order of the number of students who completed that study in 2008, from highest to lowest.
 - From 2005, VET study scores are included.
 - From 2005, data is based on 'reported' study scores, not the 'achieved' study scores.



School Mean as percentile against SFO percentile range

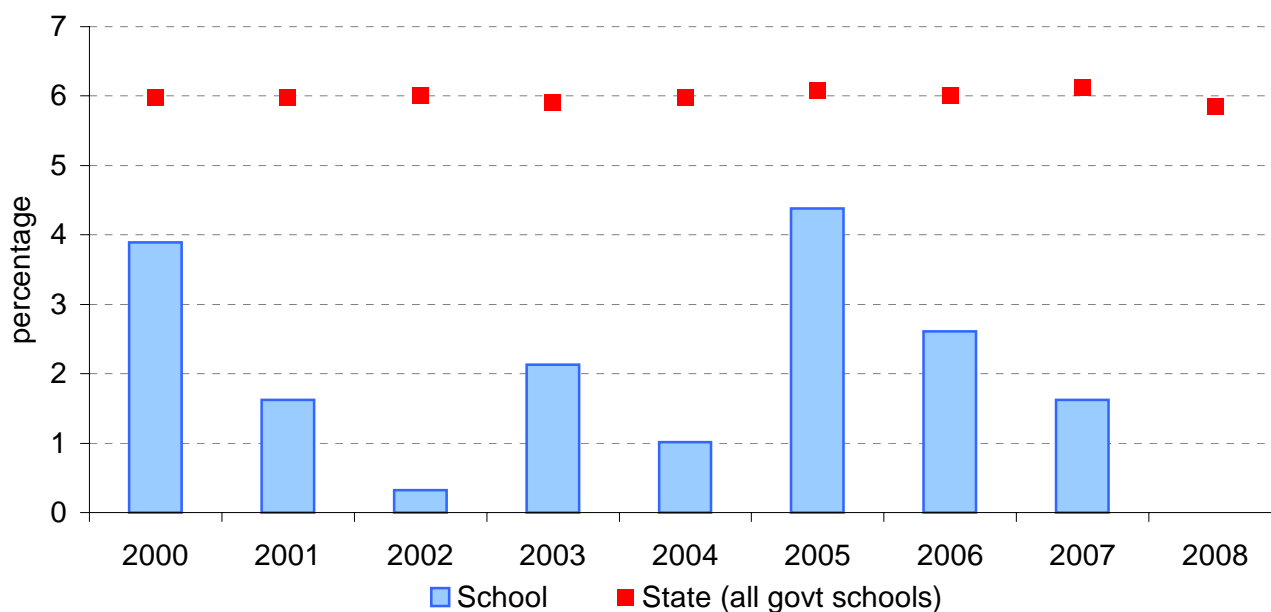


VCE: Study Scores of 40 or more

School no:	7955
School name:	Koo Wee Rup Secondary College
Explanation:	Of all VCE study scores, the percentage that were 40 or more.
Source of data:	Victorian Curriculum and Assessment Authority.

Year	School		State (all govt schools)
	Total study scores	% 40 or more*	% 40 or more
2000	257	3.9	6.0
2001	308	1.6	6.0
2002	309	0.3	6.0
2003	328	2.1	5.9
2004	395	1.0	6.0
2005	365	4.4	6.1
2006	307	2.6	6.0
2007	370	1.6	6.1
2008	386	0	5.9

VCE percentage of study scores of 40 or more*, 2000 to 2008



Note:

- * Prior to 2005, this data may not match the information published in *The Age*. Data presented on this page prior to 2005 does not include study scores from the small number of VET studies that are given study scores.
- From 2005, VET study scores are included.
- From 2005, data is based on 'reported' study scores, not 'achieved' study scores.

VET

School no: 7955
School name: Koo Wee Rup Secondary College
Source of data: Victorian Curriculum and Assessment Authority.

Notes: * - The school trendline is only plotted when there is data for each calendar year.

1 - UOC = Unit(s) of Competence.

2 - % students based on yr10, 11 & 12 August enrolments.

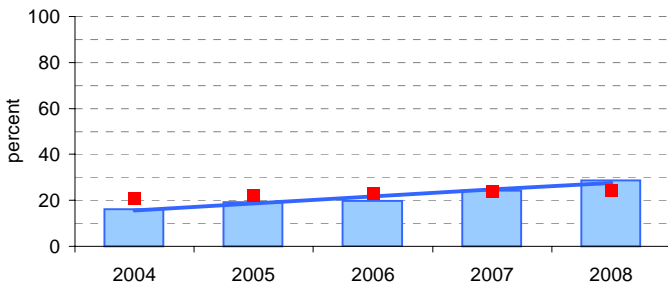
3 - Only includes students undertaking at least 1 UOC.

More detailed information is available on the VASS system provided by VCAA.

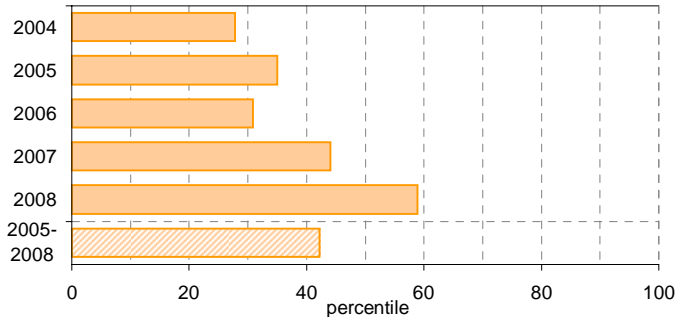
Participation						Completion			
School					State		School		State
Year	Level	No. students undertaking at least 1 UOC ¹	% students ² undertaking at least 1 UOC ¹	Avg no. UOCs ¹ undertaken per student ³	% students ² undertaking at least 1 UOC ¹	Avg no. UOCs ¹ undertaken per student ³	No. UOCs ¹ with satisfactory result	% UOCs ¹ with satisfactory result	% UOCs ¹ with satisfactory result
2004	10	17	15.2	11.1	20.7	11.9	139	73.9	71.3
	11	22	22	10.3					
	12	7	9.6	11.6					
	10-12	46	16.2	10.8					
2005	10	25	21.4	9.6	22.3	11.9	193	80.1	72.6
	11	20	22.5	8.3					
	12	9	12.2	10.2					
	10-12	54	19.3	9.2					
2006	10	21	15.2	9.2	23.0	12.0	177	91.2	75.6
	11	29	29	12					
	12	11	16.2	13.1					
	10-12	61	19.9	11.2					
2007	10	45	31.7	11.6	23.8	11.7	429	81.9	76.4
	11	27	25.2	14.4					
	12	8	9.8	8.1					
	10-12	80	24.2	12.2					
2008	10	34	27.1	9.4	24.6	12.0	252	79	76.7
	11	39	36.7	12.6					
	12	17	21.1	12.4					
	10-12	90	28.8	11.3					

Participation - % Yr10-12 students² undertaking at least 1 UOC¹

School against State

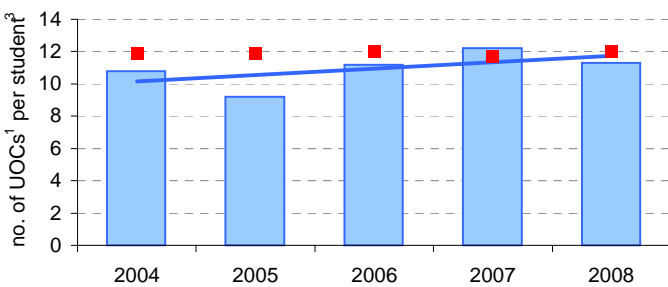


School as percentile

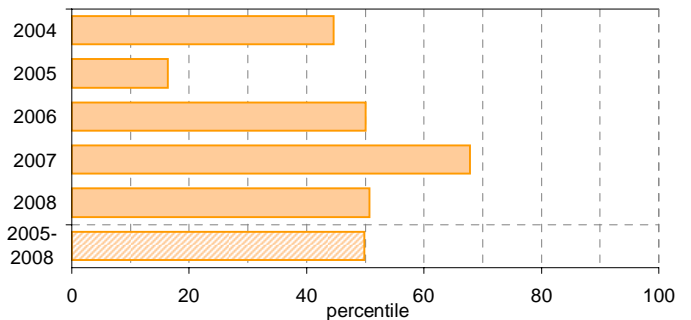


Avg no. UOCs¹ undertaken per student³

School Mean against State Mean

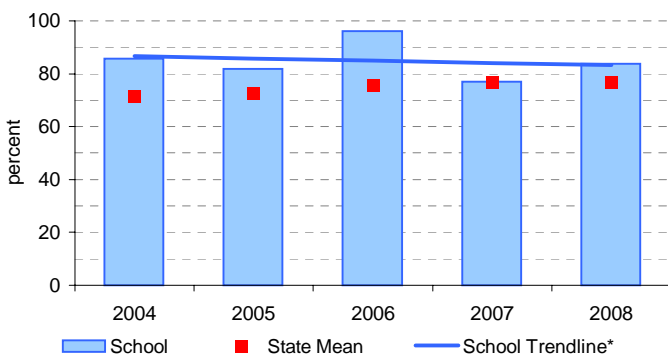


School Mean as percentile

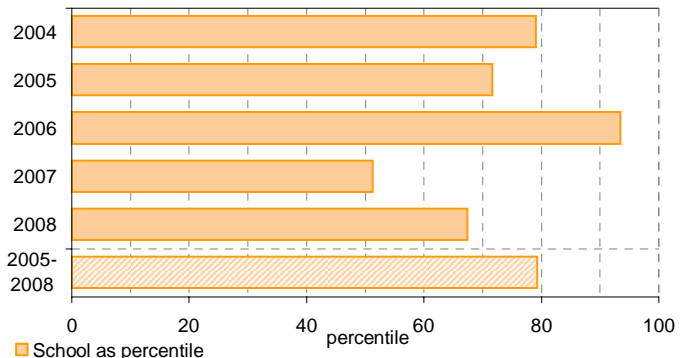


Completion - % UOCs¹ with satisfactory result

School against State



School as percentile



VCAL

School no: 7955
School name: Koo Wee Rup Secondary College
Explanation:

'No. of VCAL credits undertaken' is calculated by summing the number of credits undertaken by each VCAL student across all VCAL students.

The data contained in this page is for all VCAL strands and levels combined.

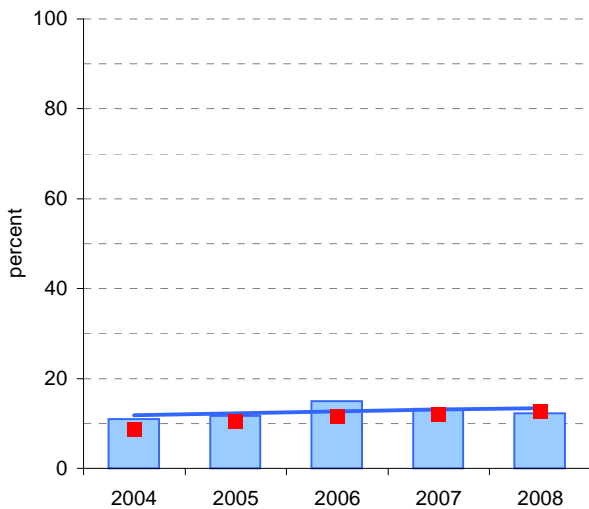
Source of data: Victorian Curriculum and Assessment Authority.
 More detailed information is available on the VASS system provided by VCAA.

Notes: * - The school trendline is only plotted when there is data for each calendar year.

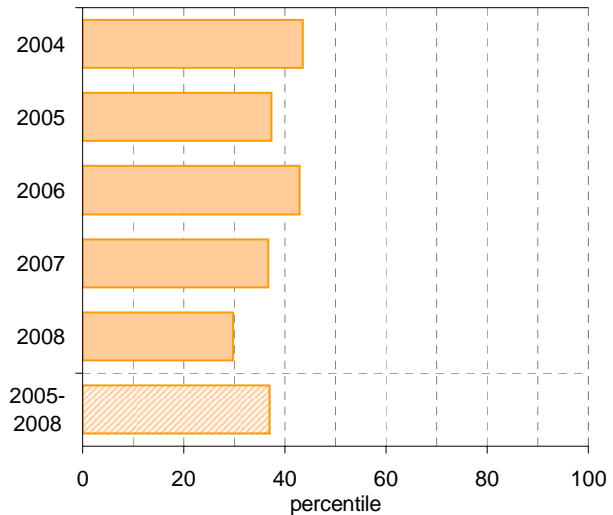
1 - No. and % students based on yr11 & 12 August enrolments.

Participation						Completion		
		School		State		School		State
Year	Year Level	No. students ¹	No. students undertaking VCAL	% students ¹ undertaking VCAL	% students ¹ undertaking VCAL	No. VCAL unit credits undertaken	% satisfactory completion of VCAL credits	% satisfactory completion of VCAL credits
2004	11-12	172.7	19	11.0	8.6	71	70.4	70.4
2005	11-12	162.3	19	11.7	10.4	93	83.9	72.9
2006	11-12	167.8	25	14.9	11.5	127	100.0	77.7
2007	11-12	188.7	25	13.3	12.0	158	91.8	76.5
2008	11-12	187.1	23	12.3	12.7	144	77.1	75.8

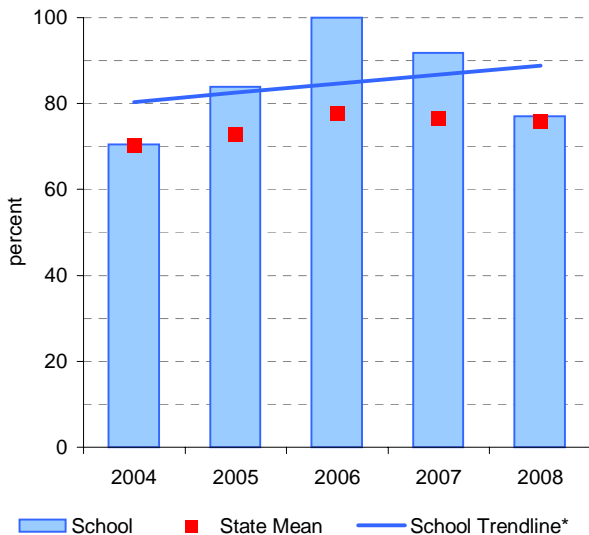
Participation - % Yr11-12 students¹ undertaking VCAL School against State



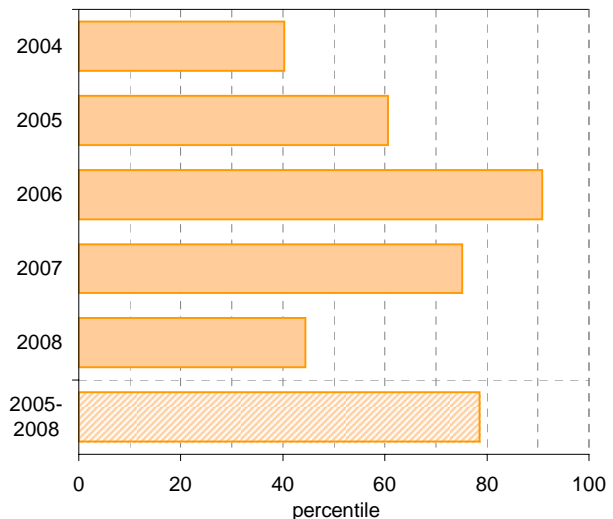
School as percentile



Completion - % satisfactory completion of VCAL credits School against State



School as percentile



■ School
 ■ State Mean
 — School Trendline*
 School as percentile

Teacher Assessment of Student Progress (PSD students)

School no: 7955

School name: Koo Wee Rup Secondary College

Explanation: Teachers assess their students' progress against the 8 VELS Domains / CSF KLAs using a 6-point scale (students in special schools and those who cannot be assessed against the VELS / CSF).

Source of data: Data transmitted from school to DEECD via an online web-form.

	No progress (%)	Little progress (%)	Satisfactory progress (%)	Good progress (%)	Very good progress (%)	Excellent progress (%)	Total students assessed ¹ (no.)
--	--------------------	---------------------------	---------------------------------	-------------------------	------------------------------	------------------------------	--

2004 (by CSF KLA)

English
Mathematics
Science
Technology
The Arts
H&PE
SOSE

2005 (by CSF KLA)

English
Mathematics
Science
Technology
The Arts
H&PE
SOSE

2006 (by VELS Domain)

English
Mathematics
Science
ICT
The Arts
H&PE
Civics & Citizenship

2007 (by VELS Domain)

English
Mathematics
Science
ICT
The Arts
H&PE
Civics & Citizenship

2008 (by VELS Domain)

English
Mathematics
Science
ICT
The Arts
H&PE
Civics & Citizenship

2007 Secondary state benchmarks (by VELS Domain)*

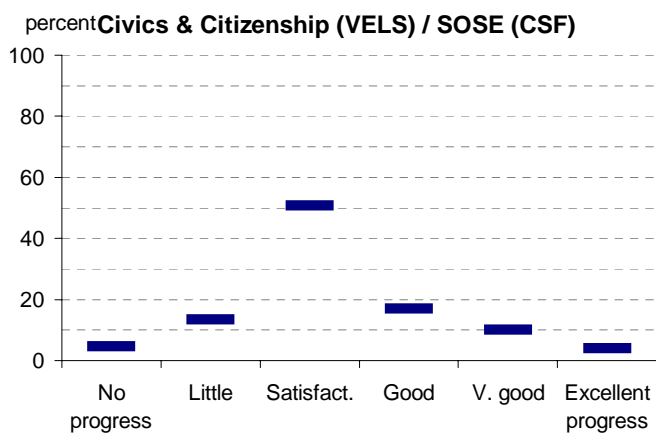
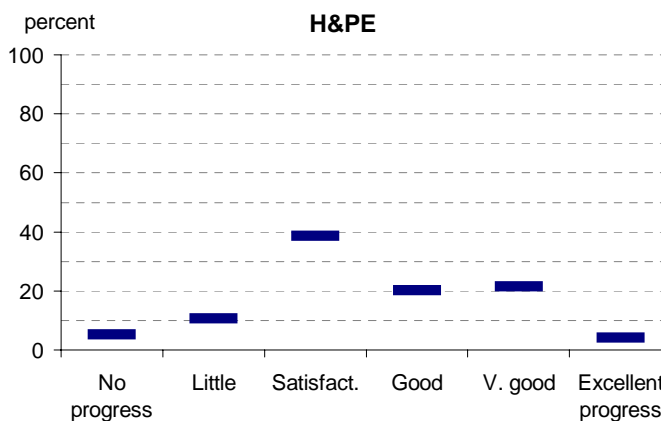
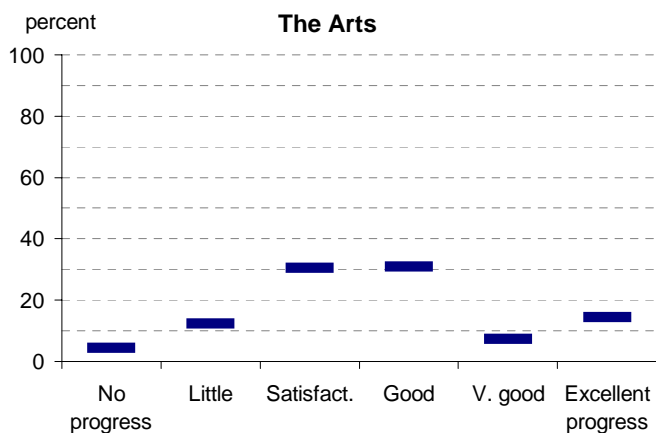
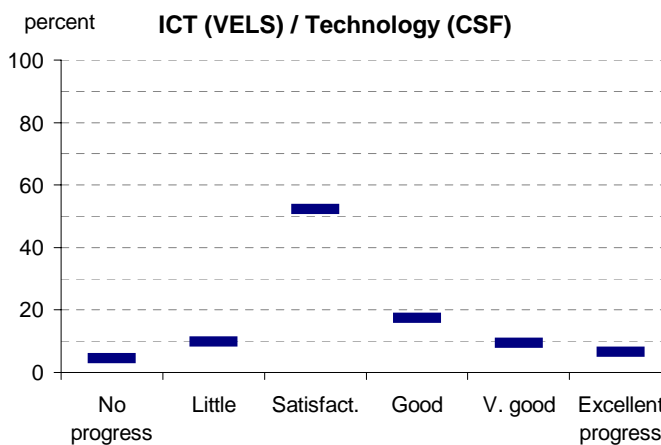
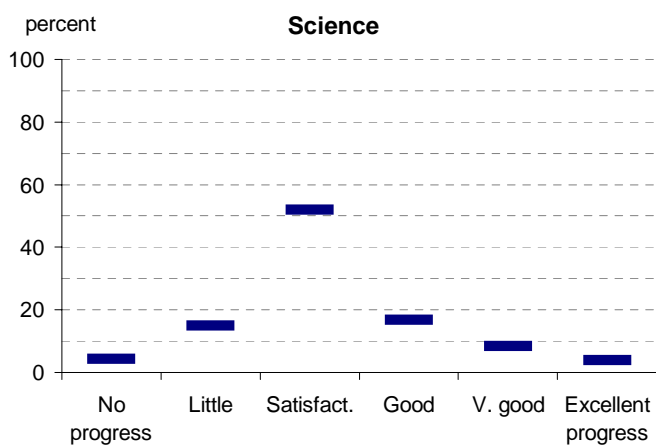
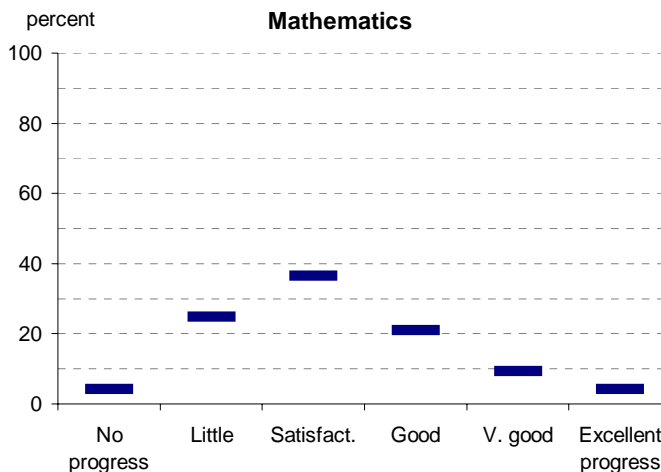
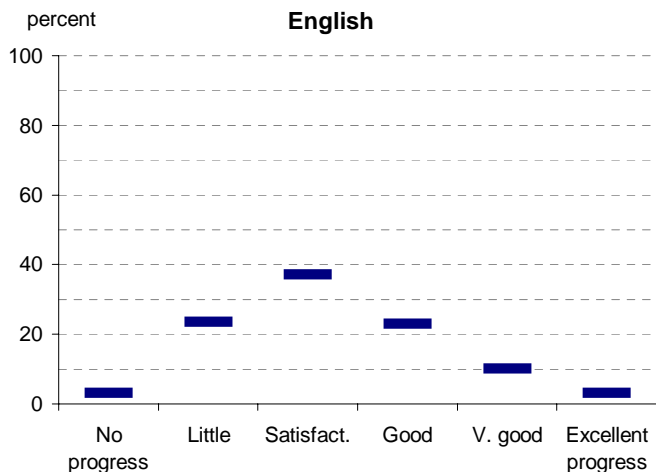
English	3	24	37	23	10	3
Mathematics	4	25	36	21	9	4
Science	4	15	52	17	8	4
ICT	5	10	52	17	9	7
The Arts	4	12	31	31	7	14
H&PE	5	11	39	20	21	4
Civics & Citizenship	5	13	51	17	10	4

Notes: ¹ If schools provided percentages only, it is not possible to report the number of students assessed. In these cases, the total percentage (100) will be shown.

* 2008 benchmarks will be calculated in August, when data from all schools has been submitted.

Teacher Assessment of Student Progress (PSD students)

School no: 7955
 School name: Koo Wee Rup Secondary College



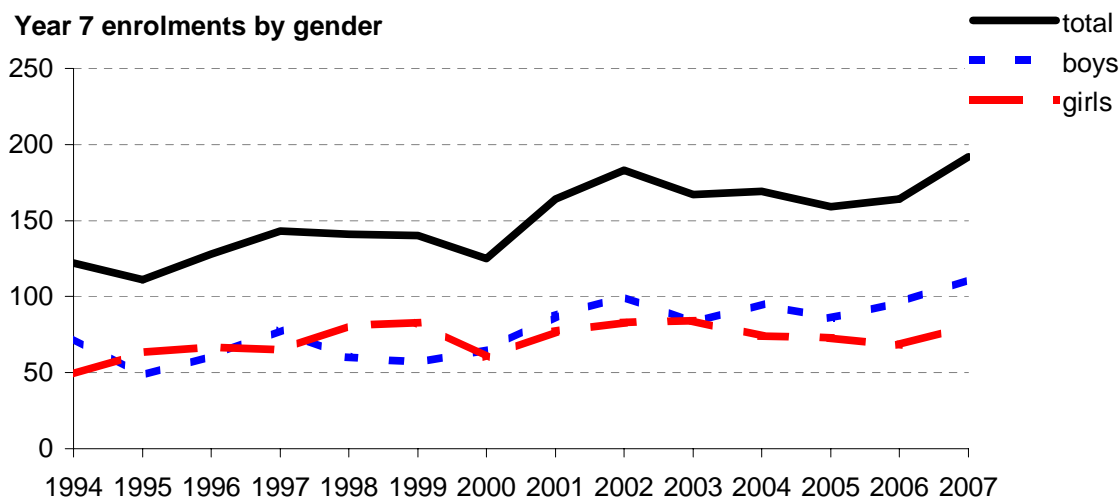
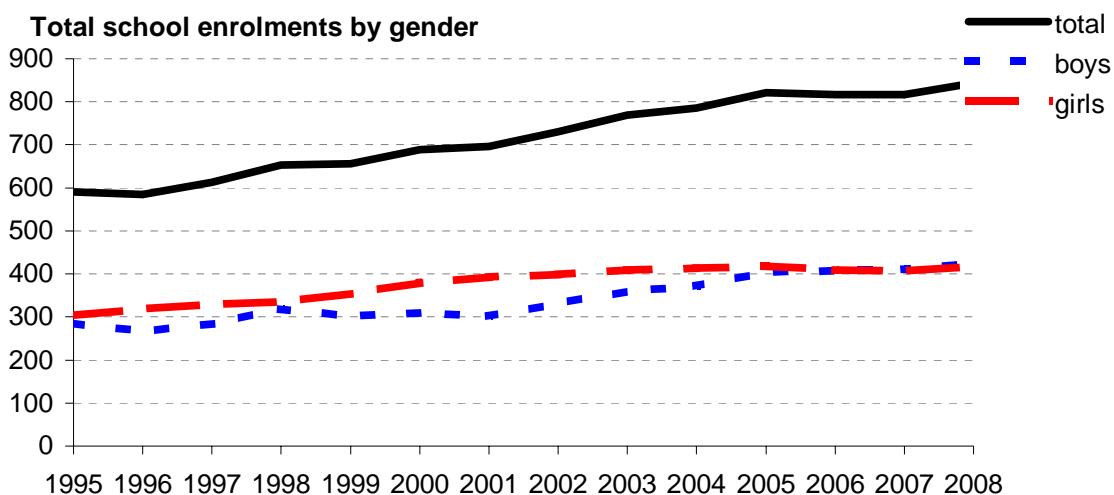
- 2004 (by CSF KLA)
- 2005 (by CSF KLA)
- 2006 (by VELS Domain)
- 2007 (by VELS Domain)
- 2008 (by VELS Domain)
- 2007 Secondary state benchmarks (by VELS Domain)*

Notes: * 2008 benchmarks will be calculated in August, when data from all schools has been submitted.

Enrolments

School no: 7955
School name: Koo Wee Rup Secondary College
Explanation: Enrolments at February census.
Source of data: February census.

Year	Total school enrolment			Prep enrolment			Year 7 enrolments		
	boys	girls	total	boys	girls	total	boys	girls	total
1995	286	304	590				73	49	122
1996	266	319	585				48	63	111
1997	284	329	613				61	67	128
1998	319	335	653				78	65	143
1999	302	354	656				60	81	141
2000	309	380	689				57	83	140
2001	303	393	696				65	60	125
2002	332	399	731				87	77	164
2003	360	409	769				100	83	183
2004	372	414	786				83	84	167
2005	404	418	822				95	74	169
2006	408	410	817				86	73	159
2007	411	406	817				96	68	164
2008	426	418	844				111	81	192



Apparent Student Retention

Note: * The school trendline is only plotted when there is data for each calendar year.

School no: 7955

School name: Koo Wee Rup Secondary College

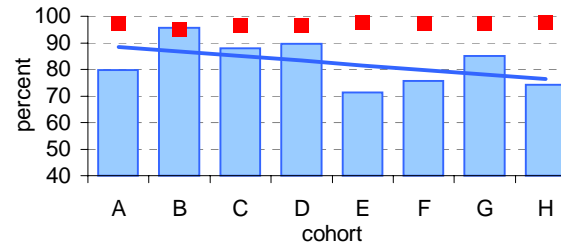
Explanation: Apparent retention rates are based on enrolments. For example, Year 7Feb-12Aug apparent retention refers to year 12 enrolment of students in full-time school education in August expressed as a percentage of year 7 enrolments in February five years earlier.

Source of data: February and August census.

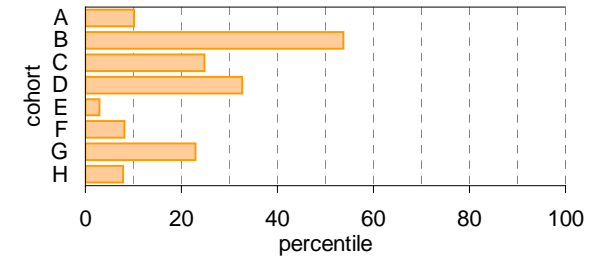
Year 7 (Feb) - 10 (Aug)

	Cohorts:	A	B	C	D	E	F	G	H
Year 7		1998	1999	2000	2001	2002	2003	2004	2005
Year 10		2001	2002	2003	2004	2005	2006	2007	2008
Year 7 (Feb)	no.	143	141	140	125	164	183	167	169
Year 10 (Aug)	no.	114	135	123	112	117	138.6	142	125.6
Year 7 (Feb) - 10 (Aug)	%	79.7	95.7	87.9	89.6	71.3	75.7	85.0	74.3
State mean	%	97.3	95.0	96.6	96.3	97.6	97.3	97.4	97.6

School against State

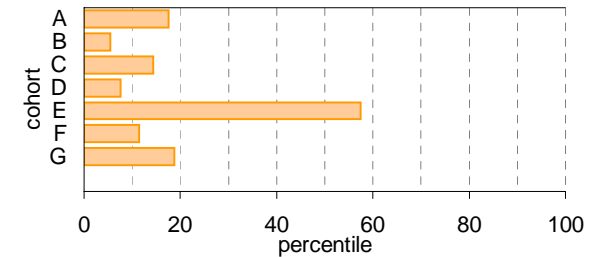
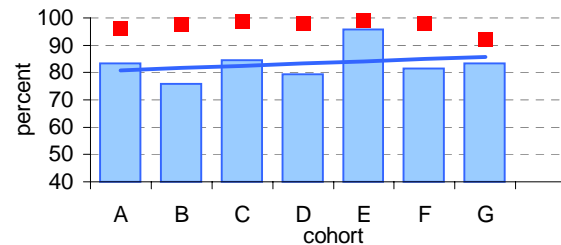


School as percentile



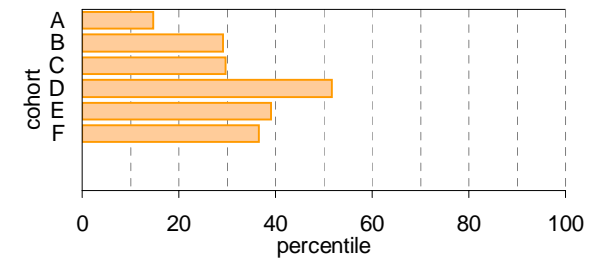
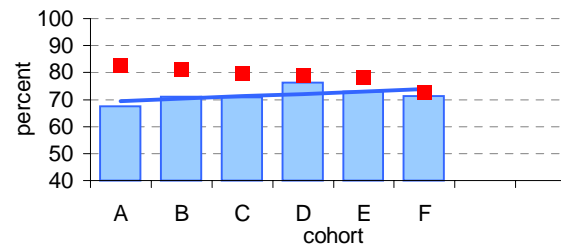
Year 10 (Aug) - 11 (Feb)

	Cohorts:	A	B	C	D	E	F	G
Year 10		2001	2002	2003	2004	2005	2006	2007
Year 11		2002	2003	2004	2005	2006	2007	2008
Year 10 (Aug)	no.	114	135	123	112	117	138.6	142
Year 11 (Feb)	no.	94.9	102.3	103.9	88.8	112	113	118.3
Year 10 (Aug) - 11 (Feb)	%	83.2	75.8	84.5	79.3	95.7	81.5	83.3
State mean	%	96.2	97.7	98.7	98.2	99.0	98.2	92.0



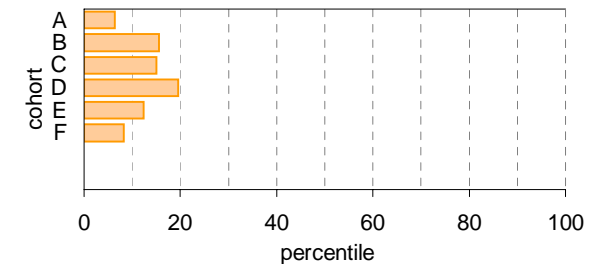
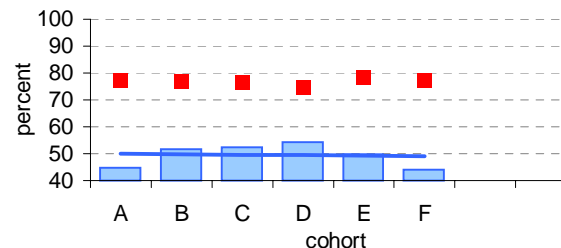
Year 11 (Feb) - 12 (Aug)

	Cohorts:	A	B	C	D	E	F
Year 11		2002	2003	2004	2005	2006	2007
Year 12		2003	2004	2005	2006	2007	2008
Year 11 (Feb)	no.	94.9	102.3	103.9	88.8	112	113
Year 12 (Aug)	no.	64	72.8	73.5	67.8	81.7	80.7
Year 11 (Feb) - 12 (Aug)	%	67.4	71.2	70.7	76.4	72.9	71.4
State mean	%	82.5	81.0	79.8	78.8	78.1	72.7



Year 7 (Feb) - 12 (Aug)

	Cohorts:	A	B	C	D	E	F
Year 7		1998	1999	2000	2001	2002	2003
Year 12		2003	2004	2005	2006	2007	2008
Year 7 (Feb)	no.	143	141	140	125	164	183
Year 12 (Aug)	no.	64	72.8	73.5	67.8	81.7	80.7
Year 7 (Feb) - 12 (Aug)	%	44.8	51.6	52.5	54.2	49.8	44.1
State mean	%	77.2	76.9	76.8	74.6	78.2	77.5



Legend: School (blue bar), State Mean (red square), School Trendline* (blue line)

Legend: School as percentile (orange bar)

Real Student Retention

Notes: * The school trendline is only plotted when there is data for each calendar year.
 ^ 2008 benchmarks will be calculated in August, when data from all schools has been submitted.

School no: 7955

School name: Koo Wee Rup Secondary College

Explanation: Real retention rates show the percentage of students who have been enrolled at the same school over a period of time.

For example, the formula for the real retention rate for Year 7Feb to 10Aug for school X in 2008 is as follows:

$$\frac{\text{(no. of students enrolled in Yr10 in school X as at August 2008 census and who enrolled prior to 1/3/2005, ie, enrolled in school X at beginning of Yr7)}}{\text{(enrolments in Yr7 Feb in 2005 according to census)}}$$

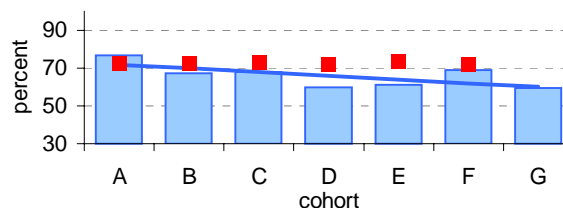
By definition, real school retention will be less than or equal to 100% (assuming there are no students repeating the year, or accelerating through years). Generally, real school retention rates are affected by students transferring to another school & students exiting the school system. They are a measure of the 'holding power' of the school.

Source of data: Data retrieved electronically from CASES21 at time of rollover.

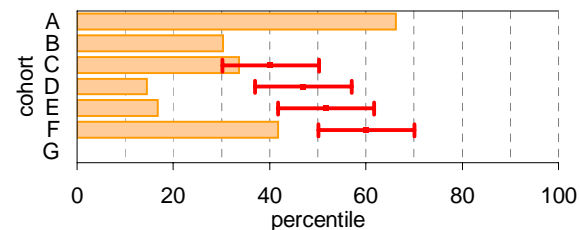
Year 7 (Feb) - 10 (Aug)

	Cohorts:	A	B	C	D	E	F	G
Year 7		1999	2000	2001	2002	2003	2004	2005
Year 10		2002	2003	2004	2005	2006	2007	2008
Year 7 (Feb)	no.	141	140	125	164	183	167	169
Year 10 (Aug)	no.	108	94	85	98	111.7	115	100.6
Year 7 (Feb) - 10 (Aug)	%	76.6	67.1	68.0	59.8	61.0	68.9	59.5
State mean^	%	72.5	72.7	72.8	71.7	73.5	71.5	

School against State^

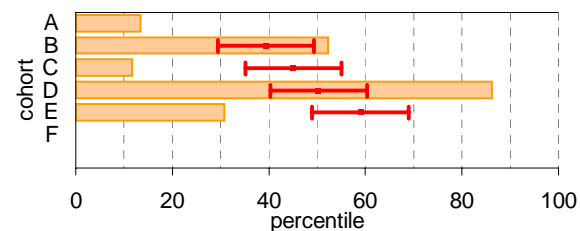
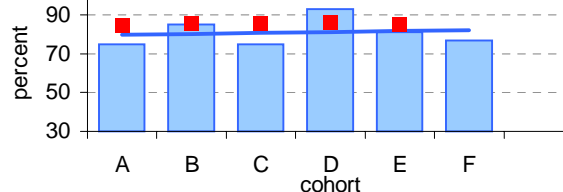


School as percentile against SFO percentile range^



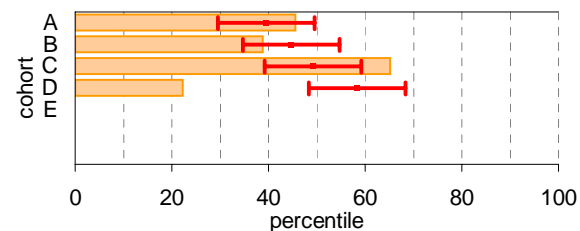
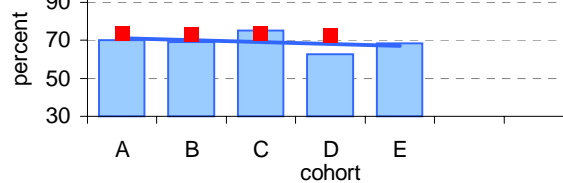
Year 10 (Aug) - 11 (Feb)

	Cohorts:	A	B	C	D	E	F
Year 10		2002	2003	2004	2005	2006	2007
Year 11		2003	2004	2005	2006	2007	2008
Year 10 (Aug)	no.	135	123	112	117	138.6	142
Year 11 (Feb)	no.	100.9	104.9	83.8	109	112.6	109.3
Year 10 (Aug) - 11 (Feb)	%	74.7	85.3	74.8	93.2	81.2	77.0
State mean^	%	84.9	85.9	85.9	86.1	85.1	



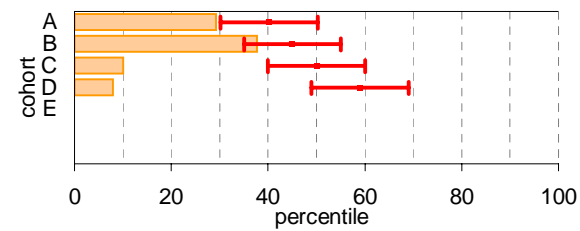
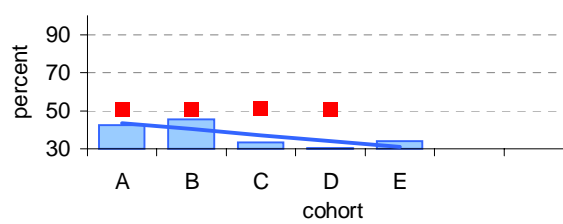
Year 11 (Feb) - 12 (Aug)

	Cohorts:	A	B	C	D	E
Year 11		2003	2004	2005	2006	2007
Year 12		2004	2005	2006	2007	2008
Year 11 (Feb)	no.	102.3	103.9	88.8	112	113
Year 12 (Aug)	no.	71.8	71.6	66.8	70	77.3
Year 11 (Feb) - 12 (Aug)	%	70.2	68.9	75.2	62.5	68.4
State mean^	%	73.9	73.0	73.5	72.5	



Year 7 (Feb) - 12 (Aug)

	Cohorts:	A	B	C	D	E
Year 7		1999	2000	2001	2002	2003
Year 12		2004	2005	2006	2007	2008
Year 7 (Feb)	no.	141	140	125	164	183
Year 12 (Aug)	no.	59.9	63.8	41.8	50	62.5
Year 7 (Feb) - 12 (Aug)	%	42.5	45.6	33.4	30.5	34.2
State mean^	%	50.6	51.0	51.1	50.8	



Legend: School (blue bar), State Mean (red square), School Trendline* (blue line)

Legend: School as percentile (orange bar), SFO Percentile range (red arrow)

Exit Destination: Year 10

School no: 7955

School name: Koo Wee Rup Secondary College

Explanation: The destination of students who left during or at the end of Year 10.

Source of data: Data retrieved electronically from CASES21 following February census.

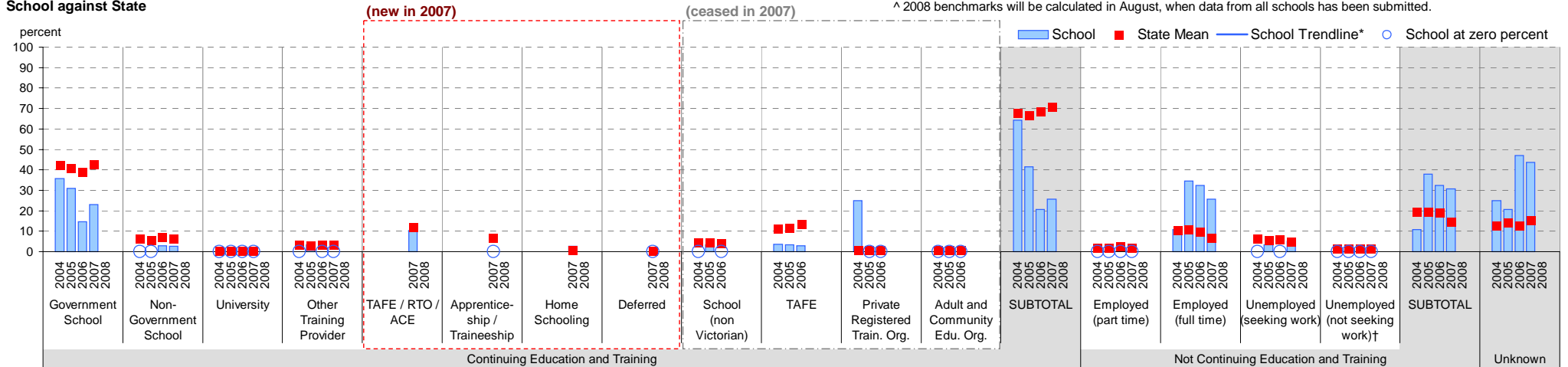
Exit Destination	2004		2005		2006		2007		2008		2007 state [^]
	n	%	n	%	n	%	n	%	n	%	%
Continuing education and training											
Government School	10	35.7	9	31.0	5	14.7	9	23.1			42.5
Non-Government School					1	2.9	1	2.6			6.0
University											0.1
Other Training Provider			1	3.4							3.3
(new in 2007)											
TAFE / RTO / ACE							4	10.3			11.7
Apprenticeship / Traineeship											6.4
Home Schooling							1	2.6			0.4
Deferred											0.0
(ceased in 2007)											
School (non Victorian)			1	3.4							
TAFE	1	3.6	1	3.4	1	2.9					
Private Registered Training Organisation	7	25.0									
Adult and Community Education Organisation											
SUBTOTAL	18	64.3	12	41.4	7	20.6	10	25.6			70.5
Not continuing education and training											
Employed (part time)											1.7
Employed (full time)	3	10.7	10	34.5	11	32.4	10	25.6			6.5
Unemployed (seeking work)			1	3.4			2	5.1			4.8
Unemployed (not seeking work)†											1.3
SUBTOTAL	3	10.7	11	37.9	11	32.4	12	30.8			14.3
Unknown	7	25.0	6	20.7	16	47.1	17	43.6			15.2
TOTAL	28	100.0	29	100.0	34	100.0	39	100.0			100.0
Total Yr 10 February enrolment	112		132		143		149				

Notes: * The school trendline is being trialled. It is only plotted when there is data for each calendar year.

† Includes deceased students.

^ 2008 benchmarks will be calculated in August, when data from all schools has been submitted.

School against State



Exit Destination: Year 11

School no: 7955

School name: Koo Wee Rup Secondary College

Explanation: The destination of students who left during or at the end of Year 11.

Source of data: Data retrieved electronically from CASES21 following February census.

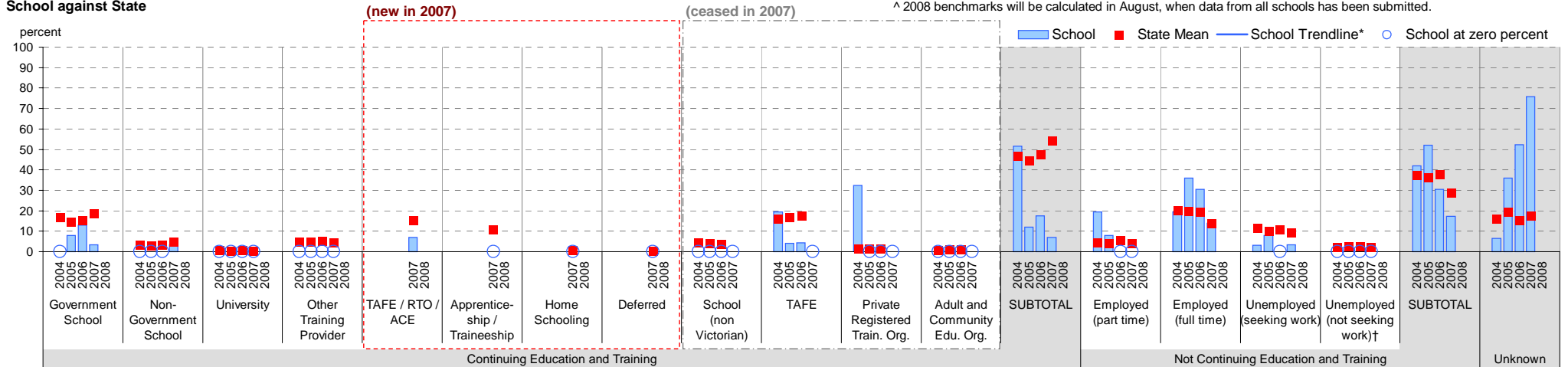
Exit Destination	2004		2005		2006		2007		2008		2007 state [^]
	n	%	n	%	n	%	n	%	n	%	%
Continuing education and training											
Government School			2	8.0	6	13.0	1	3.4			18.6
Non-Government School							1	3.4			4.4
University											0.3
Other Training Provider											4.3
(new in 2007)											
TAFE / RTO / ACE							2	6.9			15.0
Apprenticeship / Traineeship											10.7
Home Schooling											0.4
Deferred											0.0
(ceased in 2007)											
School (non Victorian)											
TAFE	6	19.4	1	4.0	2	4.3					
Private Registered Training Organisation	10	32.3									
Adult and Community Education Organisation											
SUBTOTAL	16	51.6	3	12.0	8	17.4	2	6.9			53.9
Not continuing education and training											
Employed (part time)	6	19.4	2	8.0			4	13.8			4.1
Employed (full time)	6	19.4	9	36.0	14	30.4	1	3.4			13.7
Unemployed (seeking work)	1	3.2	2	8.0							9.1
Unemployed (not seeking work)†											1.8
SUBTOTAL	13	41.9	13	52.0	14	30.4	5	17.2			28.7
Unknown	2	6.5	9	36.0	24	52.2	22	75.9			17.4
TOTAL	31	100.0	25	100.0	46	100.0	29	100.0			100.0
Total Yr 11 February enrolment	104		89		112		113				

Notes: * The school trendline is being trialled. It is only plotted when there is data for each calendar year.

† Includes deceased students.

^ 2008 benchmarks will be calculated in August, when data from all schools has been submitted.

School against State



Exit Destination: Students who left Year 12 before completing the year

School no: 7955

School name: Koo Wee Rup Secondary College

Explanation: The destination of students who left prior to completing Year 12.

Source of data: Data retrieved electronically from CASES21 following February census.

Exit Destination	2004		2005		2006		2007		2008		2007 state^
	n	%	n	%	n	%	n	%	n	%	%
Continuing education and training											
Government School					2	28.6					10.2
Non-Government School											1.8
University											1.1
Other Training Provider											3.5
(new in 2007)											
TAFE / RTO / ACE											14.7
Apprenticeship / Traineeship											7.5
Home Schooling											
Deferred											0.1
(ceased in 2007)											
School (non Victorian)					1	14.3					
TAFE											
Private Registered Training Organisation											
Adult and Community Education Organisation											
SUBTOTAL					3	42.9					39.0
Not continuing education and training											
Employed (part time)											6.0
Employed (full time)					2	28.6	5	41.7			21.6
Unemployed (seeking work)							1	8.3			12.8
Unemployed (not seeking work)†					1	14.3					2.9
SUBTOTAL					3	42.9	6	50.0			43.2
Unknown			4	100.0	1	14.3	6	50.0			17.8
TOTAL			4	100.0	7	100.0	12	100.0			100.0

Total Yr 11 February enrolment

74

78

72

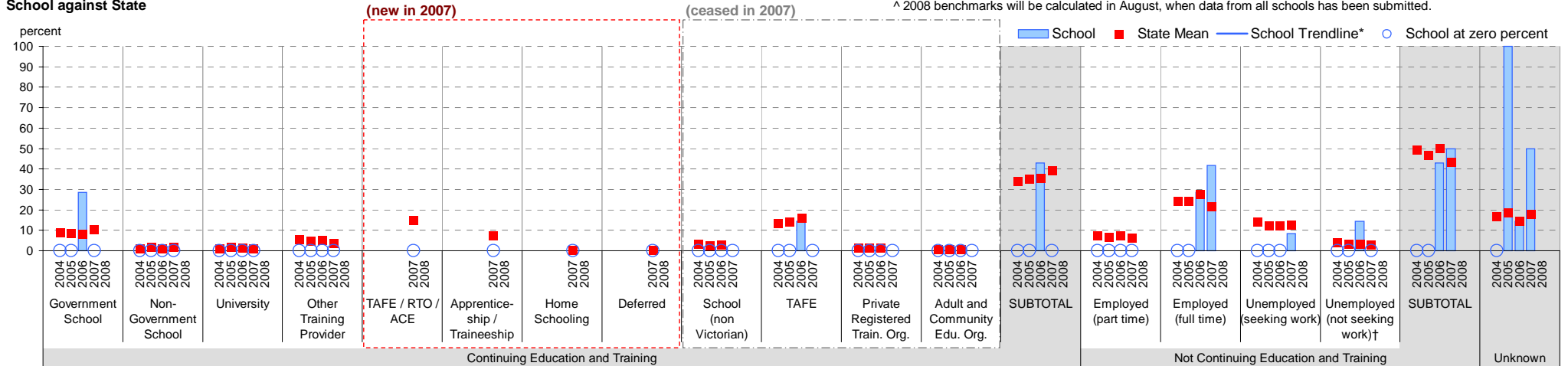
89

Notes: * The school trendline is being trialled. It is only plotted when there is data for each calendar year.

† Includes deceased students.

^ 2008 benchmarks will be calculated in August, when data from all schools has been submitted.

School against State



Exit Destination: Students who left at the end of Year 12

School no: 7955

School name: Koo Wee Rup Secondary College

Explanation: The destination of students who left at the end of Year 12.

Source of data: Data retrieved electronically from CASES21 following February census.

Exit Destination	2004		2005		2006		2007		2008		2007 state [^]
	n	%	n	%	n	%	n	%	n	%	
Continuing education and training											
Government School	1	1.2	1	1.3	13	17.1					1.2
Non-Government School											0.3
University	17	20.2	24	32.0	16	21.1					36.6
Other Training Provider	3	3.6	1	1.3							2.7
(new in 2007)											
TAFE / RTO / ACE											22.7
Apprenticeship / Traineeship											5.6
Home Schooling											0.0
Deferred											4.1
(ceased in 2007)											
School (non Victorian)											
TAFE	25	29.8	11	14.7	18	23.7					
Private Registered Training Organisation	13	15.5									
Adult and Community Education Organisation											
SUBTOTAL	59	70.2	37	49.3	47	61.8					73.2
Not continuing education and training											
Employed (part time)	2	2.4	7	9.3	3	3.9					5.5
Employed (full time)	10	11.9	14	18.7	8	10.5					10.5
Unemployed (seeking work)	1	1.2	4	5.3			1	1.3			4.4
Unemployed (not seeking work)†	2	2.4	1	1.3							0.7
SUBTOTAL	15	17.9	26	34.7	11	14.5	1	1.3			21.1
Unknown	10	11.9	12	16.0	18	23.7	76	98.7			5.7
TOTAL	84	100.0	75	100.0	76	100.0	77	100.0			100.0
Total Yr 12 February enrolment	74		78		72		89				

Notes: * The school trendline is being trialled. It is only plotted when there is data for each calendar year.

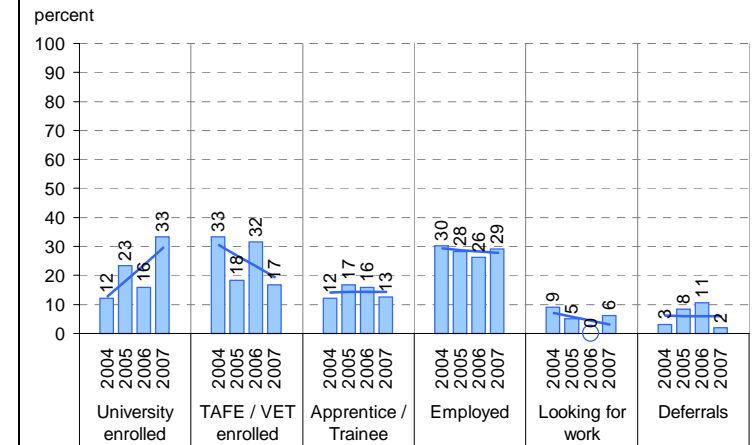
† Includes deceased students.

^ 2008 benchmarks will be calculated in August, when data from all schools has been submitted.

On Track

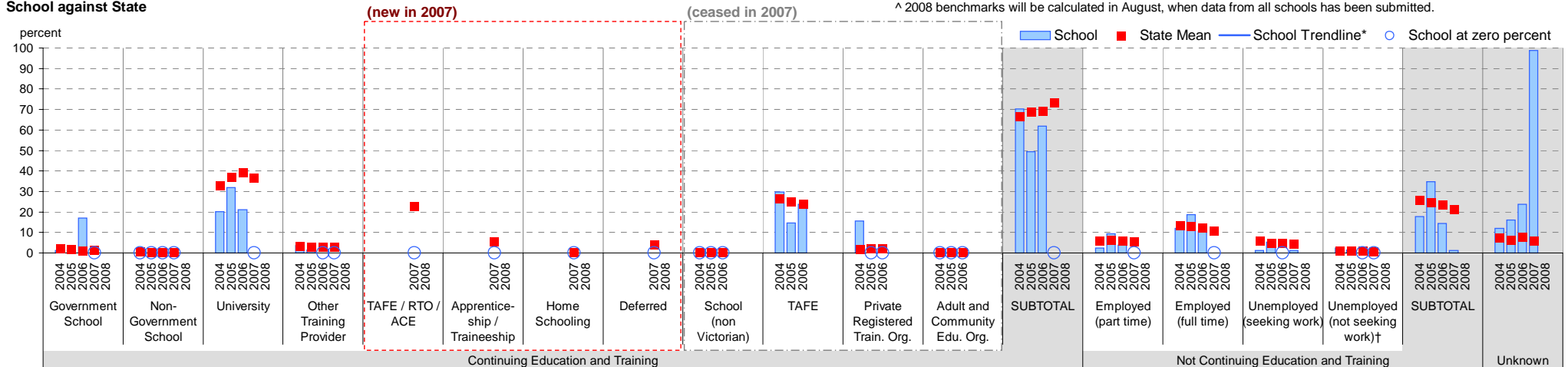
Source of data: Data received from a telephone survey of Year 12 completers, conducted in April / May of the subsequent year.

School only



Note: The exit destination data from On Track and CASES21 is not directly comparable for several reasons, one of which is the different bases. CASES21 data is based on all Year 12 completers, whereas On Track is based on Year 12 completers who responded to the survey. Hence the CASES21 data has an "unknown" category and the On Track data does not. Another reason is the slightly different categories for example, CASES21 includes a "home schooling" category.

School against State



Student Absence

School no: 7955

School name: Koo Wee Rup Secondary College

Source of data: Data retrieved electronically from CASES21.

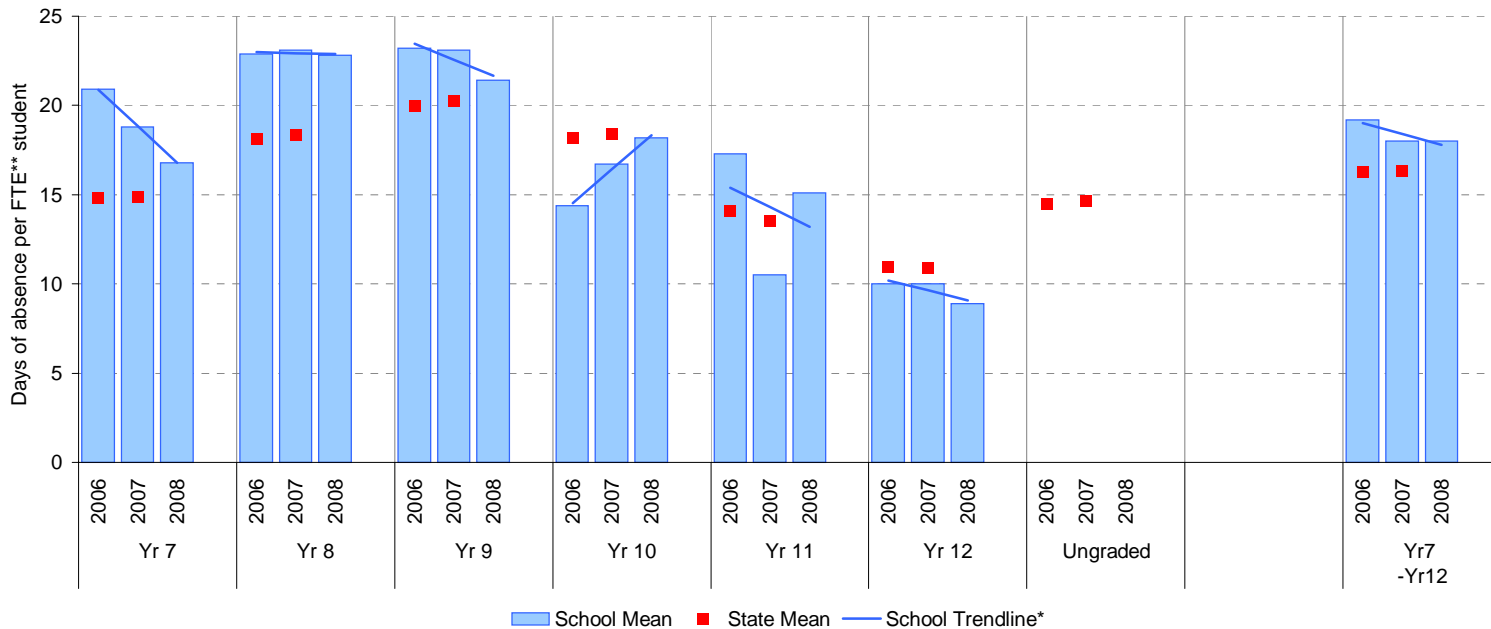
Explanation: The average (mean) number of absent days† per FTE** student.

Note that 20 absent days equates to 1 absent day per fortnight, and 10 absent days to 1 absent day per month.

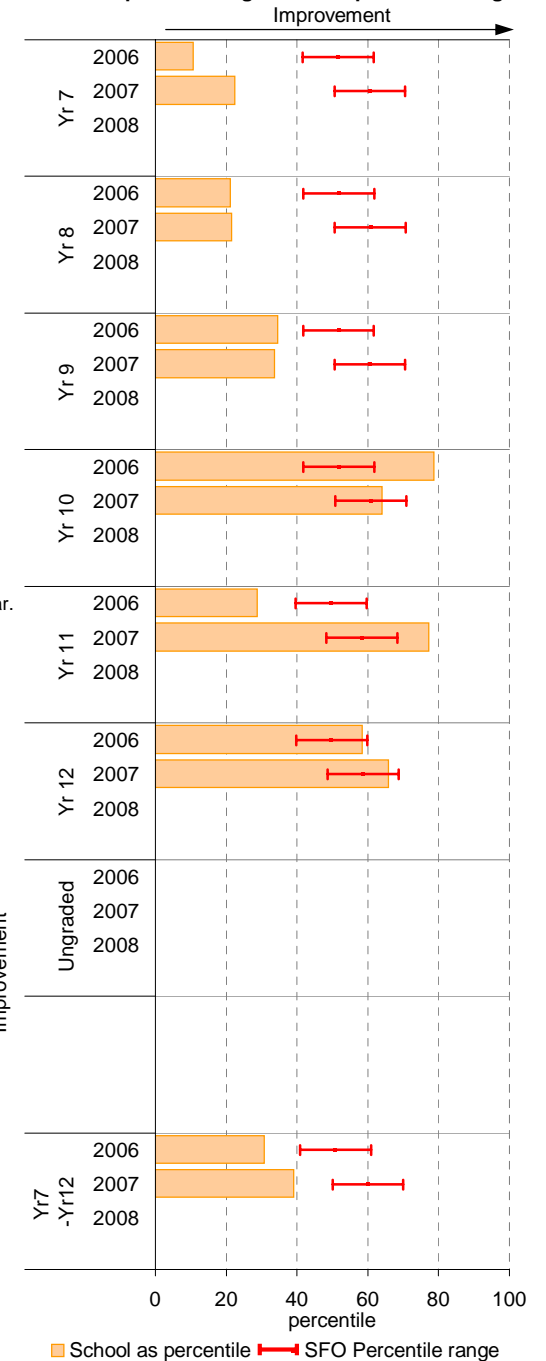
	School						2007 state benchmark^		
	2006		2007		2008		25th ptile	Mean	75th ptile
	Enrolments	Avg absent days / FTE** student	Enrolments	Avg absent days / FTE** student	Enrolments	Avg absent days / FTE** student			
Yr 7	157.7	20.9	166.6	18.8	192.0	16.8	12.6	14.9	18.6
Yr 8	155.9	22.9	154.1	23.1	175.8	22.8	15.1	18.3	22.2
Yr 9	167.8	23.2	149.8	23.1	137.6	21.4	15.9	20.2	24.8
Yr 10	138.0	14.4	144.8	16.7	125.3	18.2	15.2	18.4	22.8
Yr 11	105.1	17.3	108.6	10.5	111.0	15.1	10.9	13.5	18.5
Yr 12	70.7	10	83.8	10	83.8	8.9	8.3	10.9	14.8
Ungraded								14.6	
7-12 mean		19.2		18		18		16.3	

Notes: † Includes non-curriculum absences only (absence codes 200, 201, 202, 203, 205, 206, 207, 208, 209, 210, 211, 300, 401, 500, 700, 800, 804, 805, 900).
 * The school trendline is only plotted when there is data for each calendar year.
 ** FTE = Full Time Equivalent (including part-time and part-year fractions).
 ^ 2008 benchmarks and percentiles will be calculated in August, when data from all schools has been submitted.

School Mean against State Mean^



School Mean as percentile against SFO percentile range^



Parent Opinion

School no: 7955

School name: Koo Wee Rup Secondary College

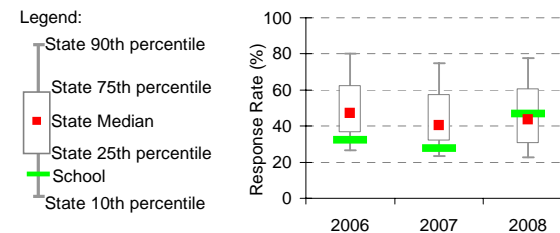
Explanation: A self-completion questionnaire to obtain parents' opinions of the school. Parents rated a number of statements using a scale where 1=strongly disagree & 7=strongly agree. The statements were grouped into the following categories.

Source of data: Data scanned from questionnaires completed by parents.

Variable No. Name	Year	School mean	State Secondary median
1 School Improvement	2006	5.19	5.13
	2007	4.76	5.11
	2008	4.79	5.07
2 Approachability	2006	5.22	5.11
	2007	4.89	5.10
	2008	4.93	5.12
3 Teacher Morale	2006	4.99	4.92
	2007	4.70	4.88
	2008	4.59	4.89
4 Parent Input	2006	5.06	4.89
	2007	4.53	4.83
	2008	4.55	4.84
5 Stimulating Learning	2006	4.96	4.81
	2007	4.51	4.79
	2008	4.54	4.82
6 Behaviour Management	2006	4.86	4.76
	2007	4.28	4.76
	2008	4.51	4.71
7 Reporting	2006	5.60	5.28
	2007	4.59	5.11
	2008	4.84	6.12
8 Learning Focus	2006	5.74	5.27
	2007	5.21	5.24
	2008	5.13	6.03
9 Transitions	2006	5.64	5.24
	2007	4.90	5.23
	2008	4.91	5.88
10 Extra Curricula	2006	4.97	4.67
	2007	4.56	4.67
	2008	4.50	5.36
11 Homework	2006	5.22	4.57
	2007	3.91	4.51
	2008	4.24	4.80
12 General Satisfaction	2006	5.74	5.33
	2007	5.11	5.31
	2008	5.28	6.22
13 Student Safety^	2006	5.33	5.37
	2007	5.03	5.42
	2008	5.16	5.96
14 Classroom Behaviour^	2006	2.96	3.56
	2007	3.43	3.47
	2008	3.35	4.74

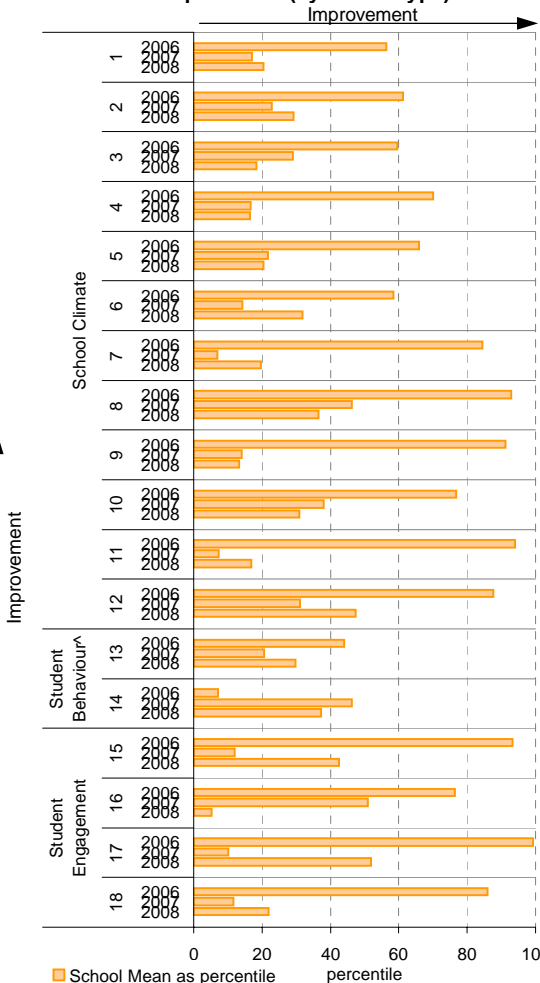
Variable No. Name	Year	School mean	State Secondary median
15 Connectedness to Peers	2006	6.00	5.71
	2007	5.39	5.68
	2008	5.63	5.78
16 Student Motivation	2006	5.12	4.87
	2007	4.82	4.81
	2008	4.24	5.95
17 Social Skills	2006	5.99	5.42
	2007	5.14	5.41
	2008	5.41	5.68
18 School Connectedness	2006	5.31	4.99
	2007	4.54	4.95
	2008	4.70	6.04

School response rate** against Secondary school distribution

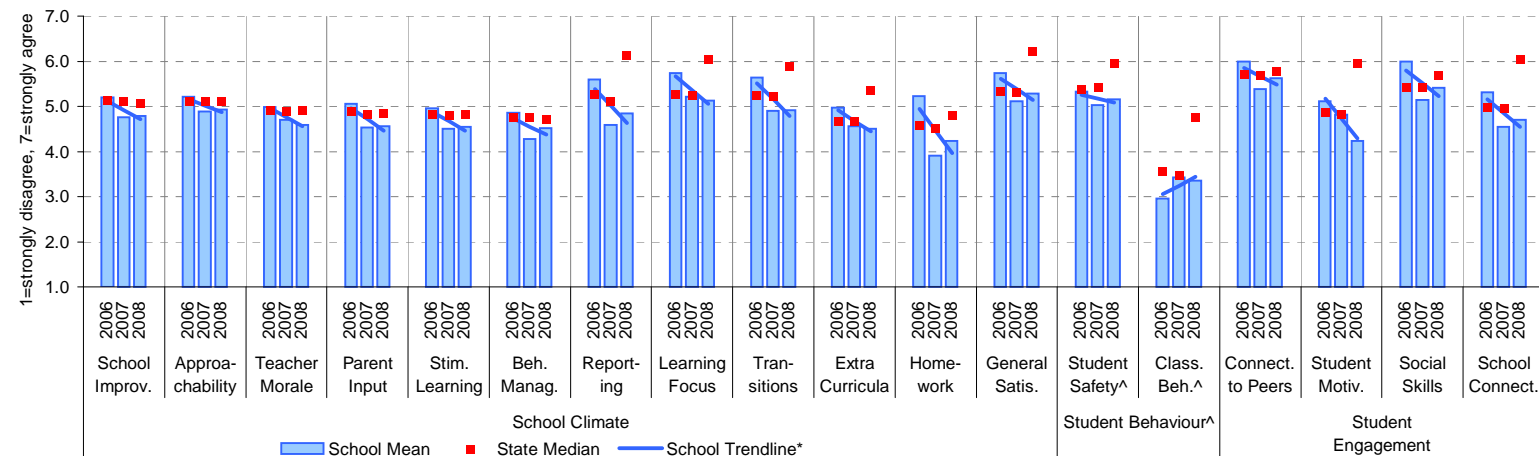


	No. of respondents	No. invited	Response Rate
2006	35	108	32.4%
2007	37	133	27.8%
2008	63	135	46.7%

School Mean as percentile (by school type)



School Mean against Secondary State Mean



Notes: * The school trendline is plotted when there is data for each calendar year.

^ Benchmarks available for Primary, Secondary, Pri/Sec, Special and SDS schools.

** If there were 6 or less respondents, table data is not shown for confidentiality reasons. If there were 3 or less respondents, graph data is not shown for confidentiality reasons.

^ Parents' responses to all negatively phrased questions have been reversed for reporting purposes. Across all variables, the higher the score or percentile rank, the more positive parents' perceptions.

Staff Opinion

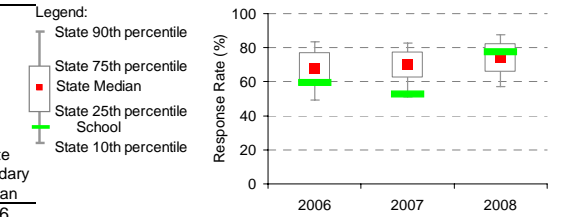
School no: 7955

School name: Koo Wee Rup Secondary College

Explanation: A self-completion questionnaire to obtain the staff's opinions of the school. The survey was administered online using the School Organisational Health Questionnaire.

Source of data: Data transmitted from school staff to DEECD via an online survey application.

School response rate** against Secondary school distribution



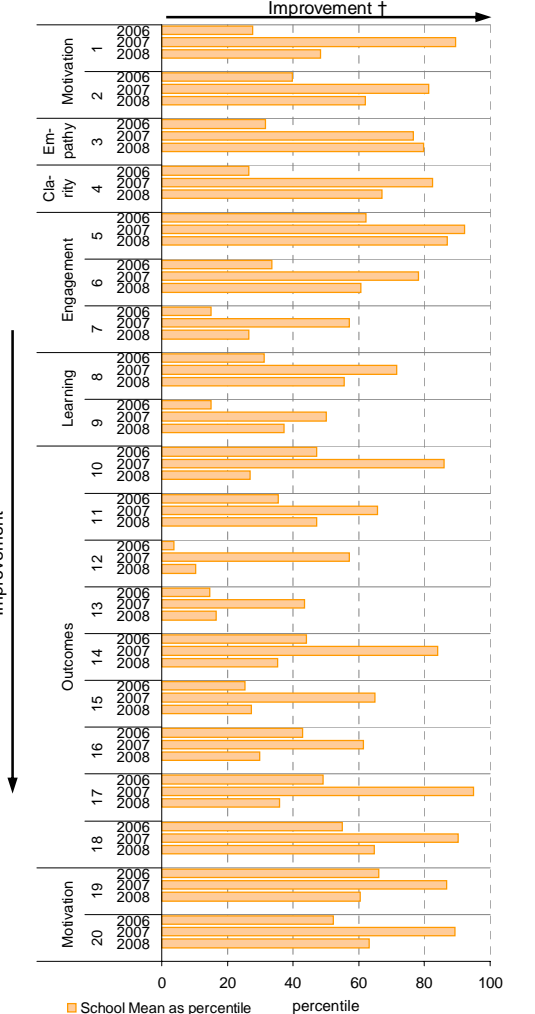
	No. of respondents	No. invited	Response Rate
2006	57	96	59%
2007	51	97	53%
2008	69	89	78%

Variable	No.	Name	Year	School mean	State Secondary median
1 Individual Morale			2006	60.4	64.2
			2007	72.2	63.5
			2008	64.8	65.0
2 School Morale			2006	58.1	60.8
			2007	69.3	60.2
			2008	64.6	62.2
3 Supportive Leadership			2006	59.4	65.0
			2007	71.4	63.8
			2008	73.3	65.8
4 Role Clarity			2006	65.0	68.0
			2007	73.2	67.8
			2008	71.1	69.1
5 Professional Interaction			2006	70.5	68.1
			2007	78.5	68.3
			2008	76.7	70.4
6 Participative Decision-Making			2006	54.9	59.0
			2007	65.5	58.7
			2008	61.8	59.8
7 Goal Congruence			2006	57.5	64.7
			2007	66.6	65.3
			2008	62.4	66.4

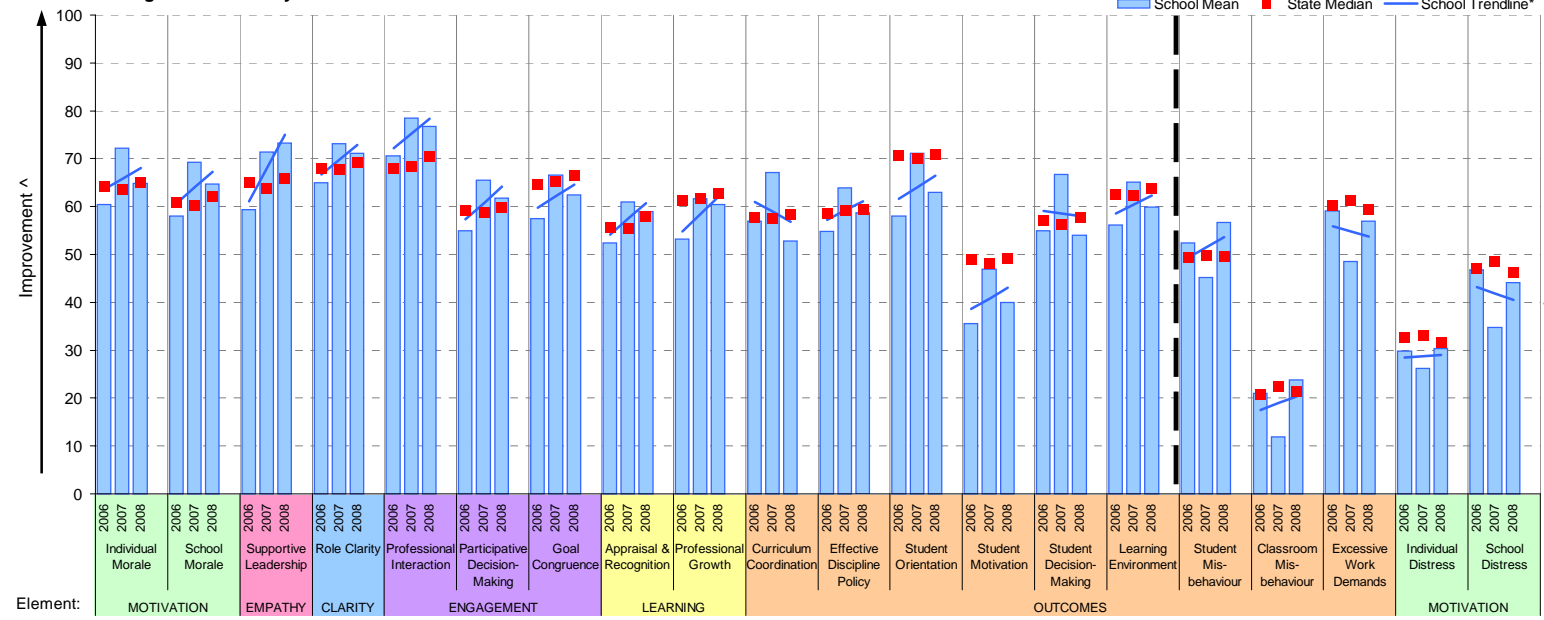
Variable	No.	Name	Year	School mean	State Secondary median
8 Appraisal & Recognition			2006	52.4	55.6
			2007	61.0	55.4
			2008	58.9	57.9
9 Professional Growth			2006	53.3	61.2
			2007	61.6	61.6
			2008	60.4	62.7
10 Curriculum Coordination			2006	57.0	57.8
			2007	67.1	57.5
			2008	52.8	58.4
11 Effective Discipline Policy			2006	54.8	58.5
			2007	64.0	59.2
			2008	58.7	59.5
12 Student Orientation			2006	58.0	70.5
			2007	71.1	70.0
			2008	62.9	70.8
13 Student Motivation			2006	35.6	48.9
			2007	46.9	48.1
			2008	40.0	49.0
14 Student Decision-Making			2006	55.0	57.2
			2007	66.8	56.2
			2008	54.0	57.8

Variable	No.	Name	Year	School mean	State Secondary median
15 Learning Environment			2006	56.1	62.6
			2007	65.2	62.3
			2008	59.9	63.8
16 Student Misbehaviour			2006	52.5	49.3
			2007	45.2	49.9
			2008	56.8	49.6
17 Classroom Misbehaviour			2006	21.0	20.9
			2007	11.9	22.4
			2008	23.9	21.4
18 Excessive Work Demands			2006	59.0	60.4
			2007	48.5	61.4
			2008	56.9	59.4
19 Individual Distress			2006	29.8	32.6
			2007	26.2	33.2
			2008	30.3	31.7
20 School Distress			2006	46.8	47.1
			2007	34.8	48.6
			2008	44.1	46.2

School Mean as percentile (by school type)



School Mean against Secondary State Median



Notes: * The school trendline is being trialled. It is only plotted when there is data for each calendar year.
 ** If there were 6 or less respondents, table data is not shown for confidentiality reasons. If there were 3 or less respondents, graph data is not shown for confidentiality reasons.
 ^ The higher the school mean, the more positive the outcome for variables 1 to 15. The lower the school mean, the more positive the outcome for variables 16 to 20.
 † The higher the school percentile, the more positive the outcome for all variables.
 ^^ Benchmarks are available for Primary, Secondary, Pri/Sec, Special & SDS schools.

Performance & Development Culture (P&DC)^{††}

NEW

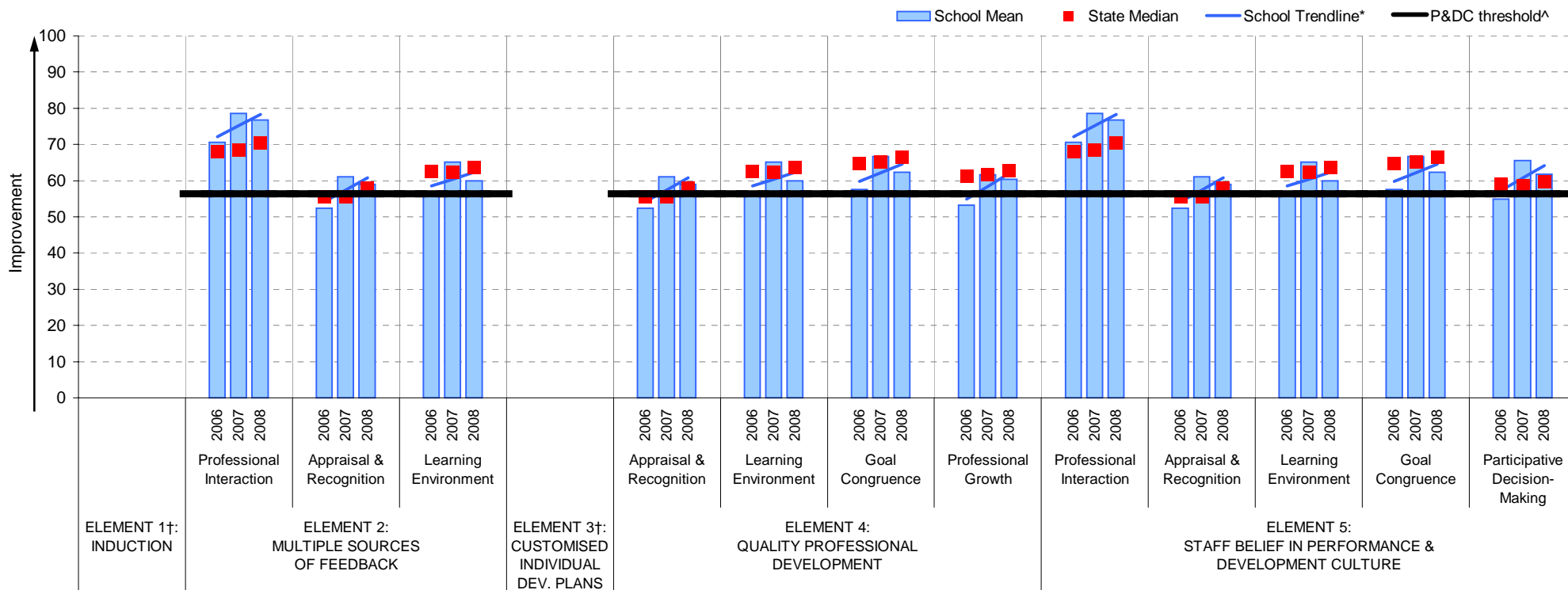
School no: 7955

School name: Koo Wee Rup Secondary College

Explanation: The data on this page refers to the Staff Opinion Survey.

Source of data: Data transmitted from school staff to DEECD via an online survey application.

School Mean against Secondary State Median



Notes:

†† An assessment of the correlation between the P&DC Questionnaire and the Staff Opinion Survey was undertaken using data from Victorian Government schools that completed both surveys from 2005 to 2007 (ie. 699 schools). This led to the identification of the components of the Staff Opinion Survey that could be used to assist schools with the ongoing monitoring of their performance and development culture. Refer to the P&DC website for further information: <http://www.education.vic.gov.au/management/schoolimprovement/panddc/default.htm>. For numerical results relating to the above graph, refer to the Staff Opinion Survey page in this report.

† Note that there is no significant correlation between the Staff Opinion Survey and P&DC elements 1 (Induction) and 3 (Customised Individual Development Plans).

^ The P&DC threshold was derived from the P&DC Questionnaire 'percent favourable' methodology where a school is considered at the standard of accreditation when their Element score is >75% favourable (ie. at least 75% of staff selected the top two response categories in the P&DC Questionnaire).

* The school trendline is only plotted when there is data for each calendar year.

** If there were 3 or less respondents, graph data is not shown for confidentiality reasons.

^^ Benchmarks are available for Primary, Secondary, Pri/Sec, Special & SDS schools.

Staff Sick Leave

School no: 7955

School name: Koo Wee Rup Secondary College

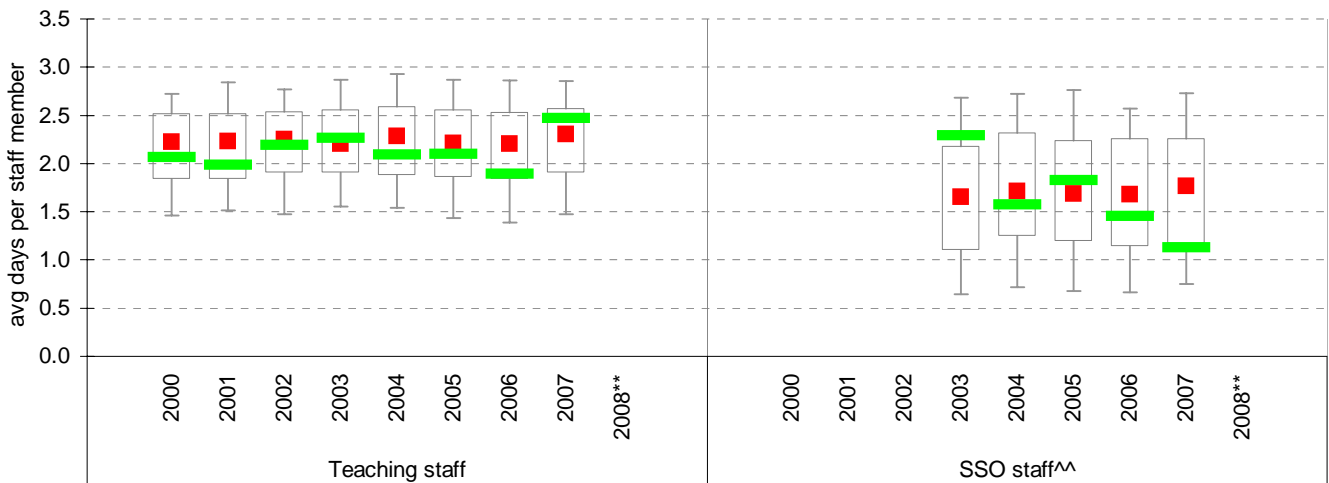
Explanation: The number of non-certificated and total sick leave days taken per staff member. A detailed explanation on how staff sick leave is calculated is provided in the Annual Reports Frequently Asked Questions page of the Standards website (<http://www.sofweb.vic.edu.au/standards/account/arepq.htm>).

Source of data: Human Resources Management System (HRMS)^.

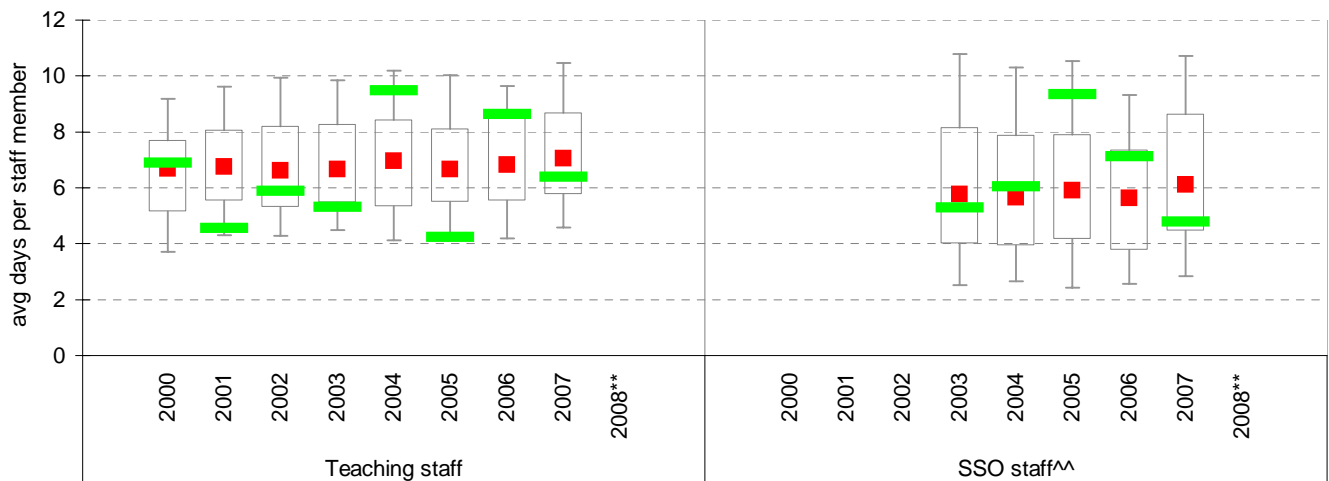
Staff Type	Non-Certificated sick leave days per staff member^									2007 State Median**
	2000	2001	2002	2003	2004	2005	2006	2007	2008**	
Teacher	2.07	1.99	2.19	2.27	2.09	2.10	1.90	2.47		2.31
SSO^^					1.57	1.83	1.46	1.13		1.77

Staff Type	Total sick leave days per staff member^									2007 State Median**
	2000	2001	2002	2003	2004	2005	2006	2007	2008**	
Teacher	6.88	4.56	5.89	5.31	9.49	4.24	8.63	6.39		7.06
SSO^^					6.04	9.34	7.12	4.78		6.10

NON-CERTIFICATED sick leave



TOTAL sick leave

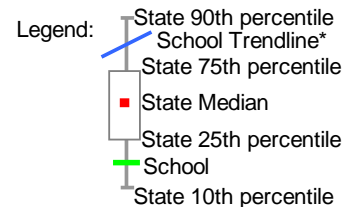


Note: * The school trendline is only plotted when there is data for each calendar year.

** Data for 2008 will be available in April / May of 2009.

^ There may be some discrepancy between the results from CASES & those from HRMS. The latter are considered to be more accurate.

^^ Data for SSO (School Services Officer) staff is only available from 2003.



Teaching Staff Retention

School no: 7955

School name: Koo Wee Rup Secondary College

Explanation: The retention rate of teaching staff is determined by matching staff payroll records for the last pay in June of one year (Year A), to the last pay in June of the following year (Year B).

Source of data: Human Resources Management System (HRMS).

Teaching Staff*

Year A	Year B	Number of Teaching Staff in Year A	Number of Teaching Staff retained in Year B	Teaching Staff Retention Rate	Statewide Average
2005	2006	79	68	86%	87%
2006	2007	76	64	84%	86%
2007	2008	76	70	92%	84%

Of the 79 teaching service staff at June 2005 (including those on leave without pay), 68 or 86% were still at the school at June 2006. This figure across all Government schools was 87%.

Of the 76 teaching service staff at June 2006 (including those on leave without pay), 64 or 84% were still at the school at June 2007. This figure across all Government schools was 86%.

Of the 76 teaching service staff at June 2007 (including those on leave without pay), 70 or 92% were still at the school at June 2008. This figure across all Government schools was 84%.

Ongoing Teaching Staff*^

Year A	Year B	Number of Ongoing Teaching Staff in Year A	Number of Ongoing Teaching Staff retained in Year B	Ongoing Teaching Staff Retention Rate	Statewide Average
2005	2006	68	58	85%	91%
2006	2007	71	61	86%	90%
2007	2008	72	68	94%	88%

Of the 68 ongoing teaching service staff at June 2005 (including those on leave without pay), 58 or 85% were still at the school at June 2006. This figure across all Government schools was 91%.

Of the 71 ongoing teaching service staff at June 2006 (including those on leave without pay), 61 or 86% were still at the school at June 2007. This figure across all Government schools was 90%.

Of the 72 ongoing teaching service staff at June 2007 (including those on leave without pay), 68 or 94% were still at the school at June 2008. This figure across all Government schools was 88%.

Notes: * Teaching staff includes Principal class, Teacher class and Instructor class. Teaching staff employed as visiting teachers, guidance officers, curriculum consultants, etc. are excluded as they are not charged to a particular school.

^ Not including fixed term staff, except for where staff had changed from ongoing in Year A to fixed term in Year B.

Bank Balances

School no: 7955

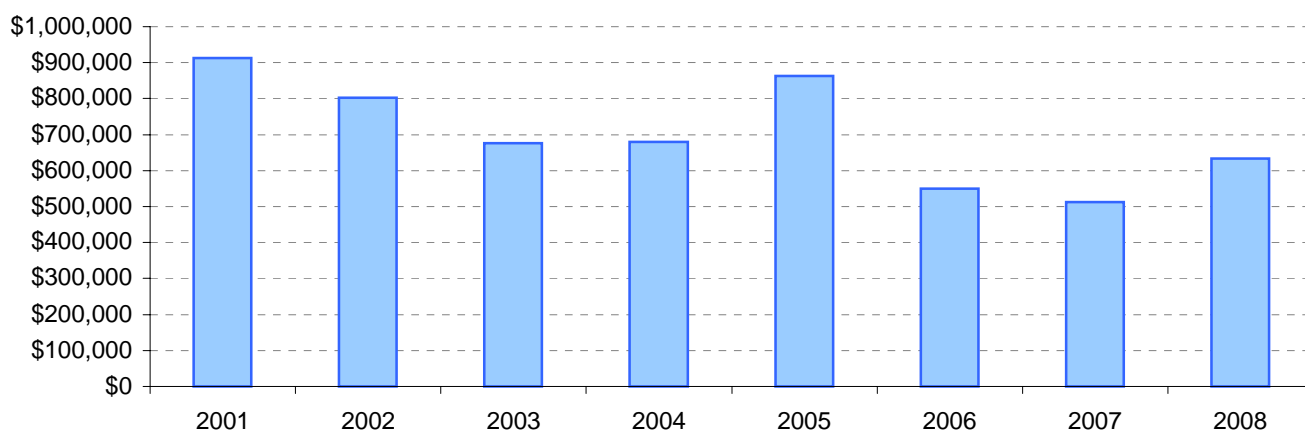
School name: Koo Wee Rup Secondary College

Explanation: Account balance figures include official and investment accounts, and are calculated by taking the opening balance at 1st January plus the total receipts at 31st December less total payments at 31st December.

Account Balances (Official plus Investment Accounts)

2001	\$911,968	2005	\$862,960
2002	\$801,728	2006	\$550,178
2003	\$676,369	2007	\$512,248
2004	\$679,426	2008	\$633,959

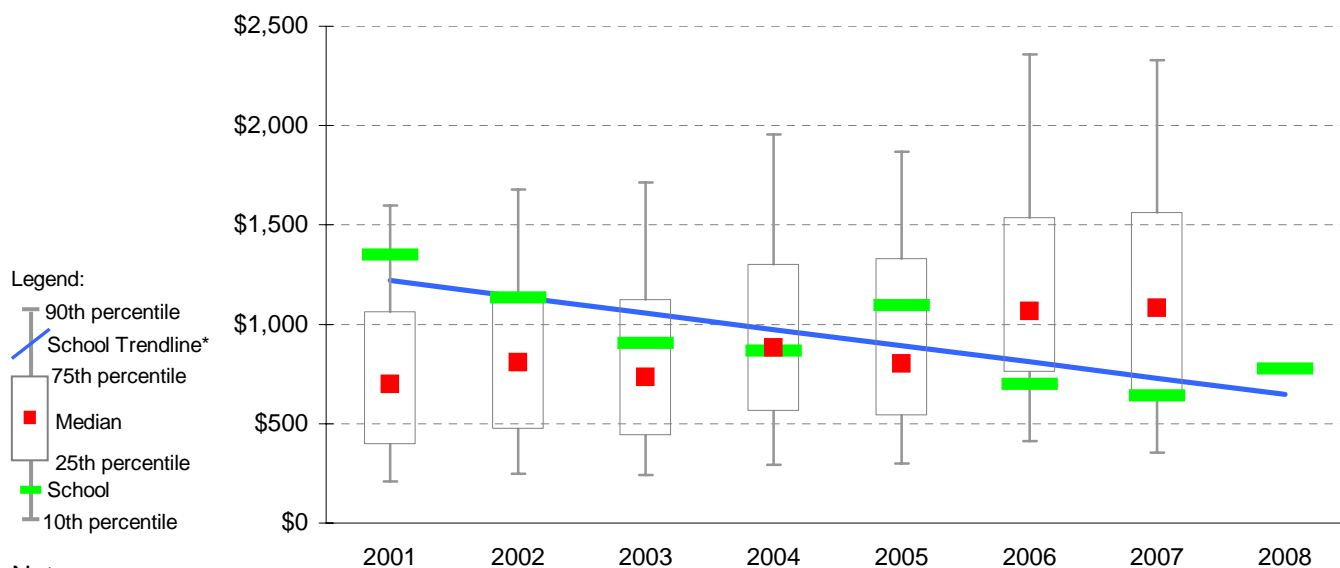
Account Balances



Account Balances (Official plus Investment Accounts) per student[†]

2001	\$1,351	2005	\$1,094
2002	\$1,135	2006	\$700
2003	\$904	2007	\$640
2004	\$867	2008	\$777

School account balances per student enrolled in August census plotted on state Secondary benchmarks[^]



Notes:

* The school trendline is being trialled. It is only plotted when there is data for each calendar year.

† The account balance per student has been calculated to enable some comparison to be made between schools.

^ Benchmarks for primary, secondary, pri/sec, SDS, special and language schools.